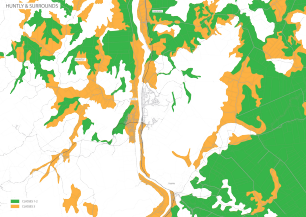


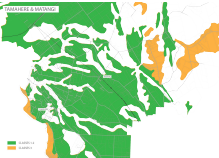
HUNTLY & SUBURBOUNDS

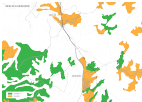




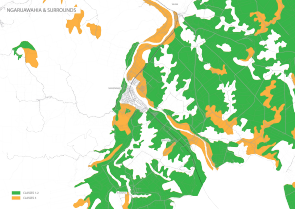
TAMAHERE & MATANGI

- WARD 1-4
- WARD 5





NGAPLAWAHA & SURROUNDS



REGIUNARNO



REGIONALE



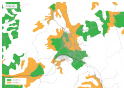


FIGURE 1



FIGURE 1. The 100 largest cities in 1950 and 2000. Source: U.S. Census Bureau, *Urban and Metropolitan Areas*, 1950 and 2000.



Figure 1. Distribution of the Common Nettle (*Urtica dioica*) in the United Kingdom in 2017. The map shows the species is present in most of the southern and central regions, but absent in the north and west.

Figure 2. Distribution of the Common Nettle (*Urtica dioica*) in the United Kingdom in 2017. The map shows the species is present in most of the southern and central regions, but absent in the north and west.

Figure 3. Distribution of the Common Nettle (*Urtica dioica*) in the United Kingdom in 2017. The map shows the species is present in most of the southern and central regions, but absent in the north and west.

Figure 4. Distribution of the Common Nettle (*Urtica dioica*) in the United Kingdom in 2017. The map shows the species is present in most of the southern and central regions, but absent in the north and west.

Figure 5. Distribution of the Common Nettle (*Urtica dioica*) in the United Kingdom in 2017. The map shows the species is present in most of the southern and central regions, but absent in the north and west.

Figure 6. Distribution of the Common Nettle (*Urtica dioica*) in the United Kingdom in 2017. The map shows the species is present in most of the southern and central regions, but absent in the north and west.

Figure 7. Distribution of the Common Nettle (*Urtica dioica*) in the United Kingdom in 2017. The map shows the species is present in most of the southern and central regions, but absent in the north and west.

Figure 8. Distribution of the Common Nettle (*Urtica dioica*) in the United Kingdom in 2017. The map shows the species is present in most of the southern and central regions, but absent in the north and west.

Figure 9. Distribution of the Common Nettle (*Urtica dioica*) in the United Kingdom in 2017. The map shows the species is present in most of the southern and central regions, but absent in the north and west.

Figure 10. Distribution of the Common Nettle (*Urtica dioica*) in the United Kingdom in 2017. The map shows the species is present in most of the southern and central regions, but absent in the north and west.



