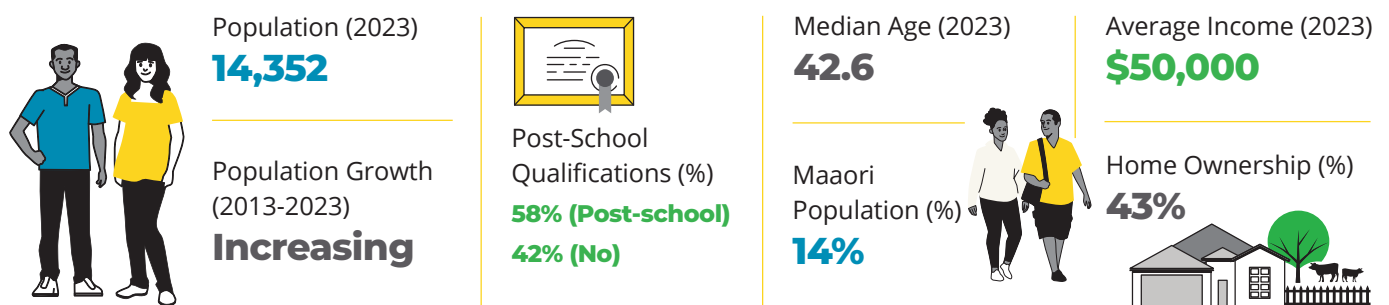


# Tamahere-Woodlands General Ward

Some key towns in the ward include Tamahere, Matangi, Puketaha, Newstead, Gordonton, Eureka.

## Demographic Summary from Census 2023

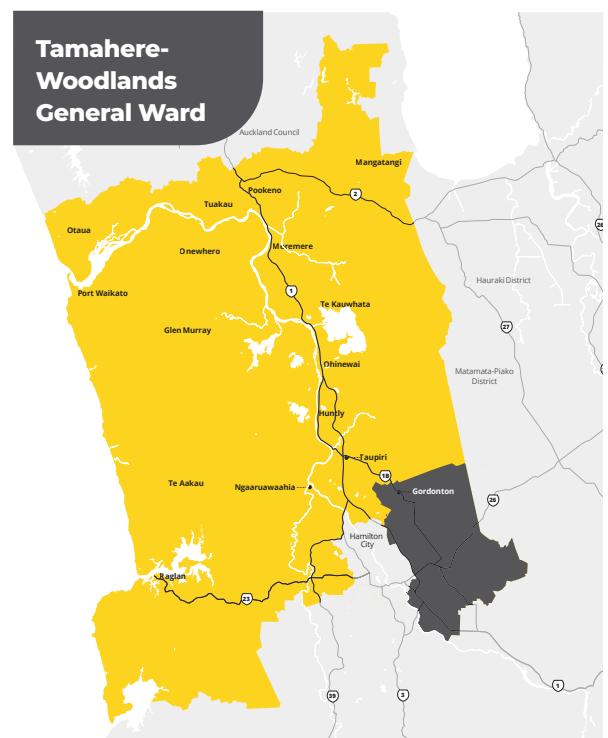


Here is a snapshot of Waikato District Council's plans for the Tamahere-Woodlands General Ward area in the draft 2025-2034 Long Term Plan (LTP).

## Proposed rating impacts for the area

Gordonton (Residential)	2024/25	2025/26
Rating Valuation	740,000	740,000
Capital Value Rates	1,564.51	1,630.96
UAGC	526.15	548.5
Fixed Targeted Rates	1,246.27	1,413.13
<b>Total Rates</b>	<b>3,336.93</b>	<b>3,592.58</b>
<b>Total % Increase</b>		<b>7.66%</b>
<b>Total \$ Increase</b>		<b>255.66</b>
<b>Increase per week</b>		<b>\$4.92</b>

You can use our rates calculator at [waikatodistrict.govt.nz/rid](http://waikatodistrict.govt.nz/rid) to see how the proposed rates might affect your property.



## Key proposed projects and points of interest for your area over the next nine years



### Capital Projects

Project	Timeline	Cost
Tamahere Walkways	Year 1 and Year 2	\$225,573 (Year 1), \$247,891 (Year 2)
New Reservoir in Matangi	Year 1 and Year 2	\$3,600,000 (Year 1), \$5,387,200 (Year 2)

In the Council's preferred option, the CCO will take over all water and wastewater services starting from year 2.

### Consultation and Community Matters



Topic	Details
Eureka Hall Targeted Rate Increase	A proposed targeted rate increase for residents in the Eureka Hall catchment of \$25, bringing the total rate to \$60 per year.
Puketaha Memorial Hall Targeted Rate	Proposed increase of \$7, bringing the annual rate to \$45

### Impact on affordability

- This draft LTP proposes a general rate increase of 4.25% from 1 July 2025, with expected increases between 1.5% and 4.5% in subsequent years.
- Proposed investments over the next nine years include \$787.1 million in roading, \$651.1 million in drinking water, \$747.9 million in wastewater management, \$145.3 million in stormwater, and \$1,782.95 million in other core services.
- The focus of this LTP is on the 'must haves' and effective delivery of what we said we were going to do. While there are many aspirations and needs across the district, some are not affordable right now as we focus on maintaining services and projects within current budget constraints.
- Council costs have increased by 20 per cent since the previous LTP, with construction costs rising by 27 per cent. This requires careful planning and prioritisation for the draft 2025-2034 LTP and is reflected in our consultation document.

## Have your say on what matters most

Ensuring local voices are heard is vital. Submissions on the draft LTP will be taken to council chambers for discussion and decision-making.

Share your views at [waikatodistrict.govt.nz/say-it](https://waikatodistrict.govt.nz/say-it)



**Consultation on the draft 2025-2034 LTP runs from 11 April to 11 May 2025.**