

# Awaroa-Maramarua General Ward

Some key towns in the ward include Maramarua, Otaua, Aka Aka and Mangatawhiri.

## Demographic Summary from Census 2023



Population (2023)

**6,363**

Population Growth  
(2013-2023)

**Steady  
increase**



Post-School  
Qualifications (%)

**47% (Post-school)  
53% (No)**

Median Age (2023)

**40.4**

Maaori

Population (%)

**18%**



Average Income (2023)

**\$45,900**

Home Ownership (%)

**50%**

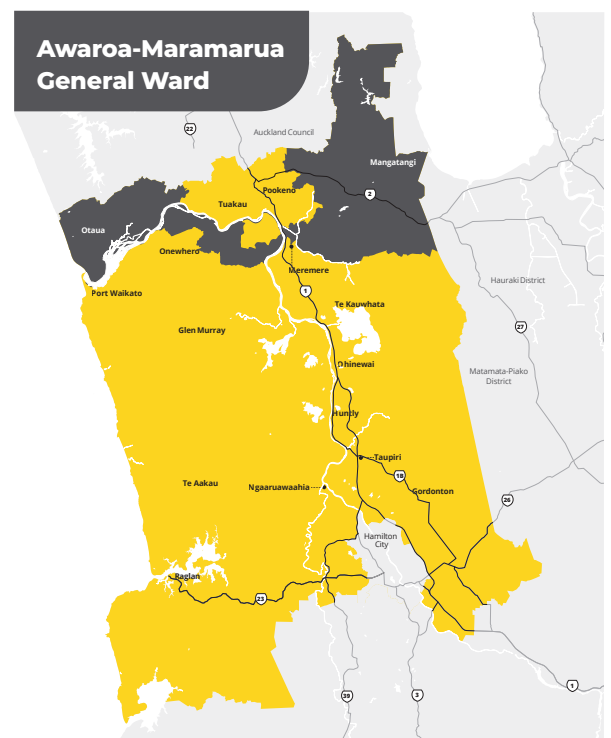


Here is a snapshot of Waikato District Council's plans for the Awaroa-Maramarua General Ward area in the draft 2025-2034 Long Term Plan (LTP).

## Proposed rating impacts for the area

Otaua (Residential)	2024/25	2025/26
Rating Valuation	1,040,000	1,040,000
Capital Value Rates	2,198.77	2,292.15
UAGC	526.15	548.5
Fixed Targeted Rates	310.56	335.03
<b>Total Rates</b>	<b>3,035.48</b>	<b>3,175.68</b>
<b>Total % Increase</b>		<b>4.62%</b>
<b>Total \$ Increase</b>		<b>140.21</b>
<b>Increase per week</b>		<b>\$2.70</b>

You can use our rates calculator at [waikatodistrict.govt.nz/rid](https://waikatodistrict.govt.nz/rid) to see how the proposed rates might affect your property.



Key proposed projects and points of interest for your area over the next nine years



Consultation and Community Matters

Topic	Details
Maramarua Hall Rate Increase	A proposed targeted rate increase of \$13, bringing the total rate to \$37 per year.

Impact on affordability

- This draft LTP proposes a general rate increase of 4.25% from 1 July 2025, with expected increases between 1.5% and 4.5% in subsequent years.
- Proposed investments over the next nine years include \$787.1 million in roading, \$651.1 million in drinking water, \$747.9 million in wastewater management, \$145.3 million in stormwater, and \$1,782.95 million in other core services.
- The focus of this LTP is on the ‘must haves’ and effective delivery of what we said we were going to do. While there are many aspirations and needs across the district, some are not affordable right now as we focus on maintaining services and projects within current budget constraints.
- Council costs have increased by 20 per cent since the previous LTP, with construction costs rising by 27 per cent. This requires careful planning and prioritisation for the draft 2025-2034 LTP and is reflected in our consultation document.

Have your say on what matters most

Ensuring local voices are heard is vital. Submissions on the draft LTP will be taken to council chambers for discussion and decision-making.

Share your views at [waikatodistrict.govt.nz/say-it](https://waikatodistrict.govt.nz/say-it)



Consultation on the draft 2025-2034 LTP runs from 11 April to 11 May 2025.