



Tuakau Community Board Plan 2024-2026

TABLE OF CONTENTS



01

**A message from your
Community Board**
Page 2

02

About Community Boards
Page 3

03

**Our community
outcomes**
Page 4

04

Our vision
Page 5

05

Our priorities
Page 6

06

Map of community area
Page 11

07

**Key amenities and
facilities**
page 12

08

**Community committee
investment**
Page 13

09

**Your community
committee**
Page 14

A message from your Community Board

Kia ora, welcome, bula, talofa, talofa ni, talofa lava, alofa, ni hao, namaste!

We are proud to present our strategic plan. This plan provides a vision and direction for the future involvement for all members of our community.

As elected members for Tuakau we are passionate about creating a greater community together. We are focused on enhancing the economic, social, cultural, and environmental wellbeings.

We recognise our community will be stronger if we work together to implement our priorities. We invite your help to create an inclusive, better Tuakau community.

With a growing community, rich in diversity, we need to foster strong connections, and enhance our sense of togetherness and belonging so Tuakau continues to be a place to live, work and play.

The Tuakau Community Board.



About community boards

Community Boards play an important role in local governance and citizen-led democracy, serving as the primary link between the local community and the Council. We are your representatives at council, and respected connectors into the community.

Our roles are governed by the Local Government Act 2002. Some of the roles specified are:

- The key connector between the community and council.
- Advocate for and represent the interests of our community.
- Consider and report on all matters referred to us by the council, or any other matter of interest to us as a board.
- Keep track of the services provided by the council in our community.
- Prepare an annual submission to the council for expenditure within our community.
- Engage with organisations and special interest groups within the local community.

Community Board Plans

Community Board Plans are developed every three years and outline our key priorities for our elected term. They also indicate how we will work in partnership with locals and mana whenua to achieve the Council's community outcomes.

A key part of the development of our plan is engagement with locals to ensure that our priorities reflect the needs and desires of Tuakau.



Our Community Outcomes



Everything we do is aimed at improving the wellbeing of the people that live, work, and explore the Waikato District. Our Community outcomes were developed under the four wellbeing pillars and describe what we want to achieve for the Waikato District into the future.



Cultural

We celebrate who we are.

We celebrate all cultures. We treasure our diverse communities, and acknowledge our cultural rights and obligations. We honour, understand and implement Te Tiriti o Waitangi and acknowledge the relationship with mana whenua of our district.



Economic

We support local prosperity.

We champion sustainable growth in our local economy. We support local enterprise and encourage innovation and socio-economic prosperity for all, while managing regulatory processes to protect and promote our unique district. We acknowledge our rural and Maaori economies as key contributors to our district's prosperity and sustainability.



Environmental

Our environmental health underpins the health of our people.

We want waterways which are healthy and create connections. We protect and enhance our soils, water and native biodiversity and take care of our taiao (natural environment) for the health and wellbeing of our people, our communities and for future generations.



Social

We have well connected communities.

Our communities are connected, safe, accessible and resilient. We put community wellbeing at the heart of our decisions, and we embrace partnerships to get things done to improve people's lives.



Our Vision

We serve to empower our community to be resilient, respectful, united and thriving, as well as helping the community to understand what the Community Board does.

Our vision statements:

- We are committed to strengthening our relationship with mana whenua and to upholding Te Tiriri o Waitangi.
- The views, interests, needs and aspirations of our community are effectively represented.
- We have an open and transparent decision-making process that our community can understand and engage in.
- Our focus is to enhance environmental, cultural, social and economic wellbeing for all generations.
- To have a strong relationship with our community as a respected arm of Waikato District Council.
- To have a strong relationship with Council so that the voice of our community is kept well-informed of things happening in our area.

Our priorities

Cultural Wellbeing

We promote and celebrate our unique and diverse culture.

This matters because...

Alongside mana whenua, we are kaitiaki of an area with a unique natural environment and heritage.

Our commitment

- Celebrate and promote our arts, all cultures, and heritage to encourage strength, togetherness and belonging.
- Promote and celebrate language weeks, the Christmas Parade, Diwali, Waitangi Day, Matariki, Chinese New Year and other significant cultural events.
- Remembering Te Ao Maaori values at during our decision-making.
- Hold hui on the Ngaa Tae e rua Paa.
- Continue to build and strengthen our relationship with mana whenua to ensure their input and perspective is heard.
- Partner with mana whenua representation to provide advice on enhancing cultural wellbeing across Tuakau.
- In partnership with mana whenua we will promote, celebrate, and educate our cultural heritage and unique natural environment.
- Work in partnership with our local artists to promote the arts for Tuakau.
- As a Board we will support discretionary funding on projects aligned to enhancing cultural wellbeing.

- As a Board we will support community-led development with letters of support for our community's priorities identified through the Blueprints and other community aspirations that our community wants to undertake.

Success looks like...

- Regular hui is being held with mana whenua.
- Arts and culturally significant events are celebrated and actively promoted in Tuakau.
- Networking meetings have been held with local artists.

Economic Wellbeing

We contribute to growing a thriving and accessible local economy that drives investment and growth.

This matters because...

A thriving economy is dependent on growth, investment, and tourism. These things have a considerable positive impact on Tuakau through business creation, increased workforce, youth employment and visitor attraction.

Our commitment

- Advocate and lobby for land to be designated appropriately to enable growth and investment to occur.
- Continue to build and strengthen our relationship with the Tuakau Business Association.
- Hold a networking hui with Tuakau businesses to present our Community Board Plan.
- Celebrate our local businesses in Tuakau in partnership with others.

- Partner with organisations and local business to offer the right support to support our young people into employment.
- Work with our youth and other organisations to ensure that our young people are well positioned for sustainable career pathways.
- Undertake a stocktake of existing tourism opportunities, including environmental tourism in Tuakau.
- Promote and advocate for tourism opportunities, including environmental tourism, to attract visitors to our village.
- Work, in partnership with others, to encourage and support our youth to have a voice at our hui.
- Build relationships with our local Police and local businesses to create a safe community.
- As a Board we will support discretionary funding on projects aligned to enhancing economic wellbeing.
- As a Board we will support community-led development with letters of support for our community's priorities identified through the Blueprints and other community aspirations that our community wants to undertake

Success looks like...

- A meeting has been co-ordinated with the Strategic Planning Team to identify future growth and commercial land opportunities.

- We have actively promoted and advocated for growth, investment and tourism for Tuakau.
- Youth to employment sessions have been held in partnership with others.
- Discussions with schools, mana whenua, and other organisations on sustainable career pathways are underway.
- Relationships have been built and a networking hui has been held with local business to showcase our priorities regarding economic wellbeing and youth to local employment.

Environmental Wellbeing

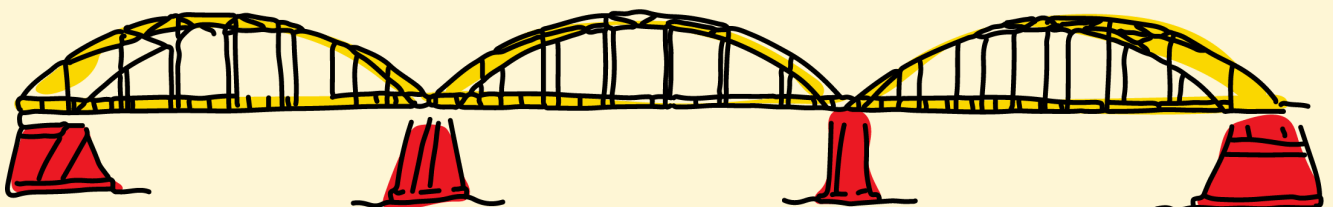
We look to protect and enhance our natural environment alongside mana whenua through sustainable community partnerships.

This matters because...

As kaitiaki alongside mana whenua, we are here to protect, enhance and educate our communities on the integrity of our waterways and natural environment now and for future generations.

Our commitment

- Partner with Council, the Waikato Regional Council, Waikato Tainui, mana whenua, to identify the many opportunities for native planting and ecological restoration.



- Advocate for the protection of our natural environment and significant heritage.
- Undertake a stock take of the environmental projects and initiatives happening within Tuakau.
- Support and promote existing and new environmental initiatives and projects.
- Hold community days, in partnership with other organisations, to educate and encourage the preservation and enhancement of our natural environment.
- Hold and promote annual clean-up days with the Tuakau community in partnership with the Council and our schools.
- Establish a group of local volunteers passionate about protecting and enhancing our natural environment to assist in the education of our community.
- As a Board we will support discretionary funding on projects aligned to enhancing environmental wellbeing.
- As a Board we will support community-led development with letters of support for our community's priorities identified through the Blueprints and other community aspirations that our community wants to undertake.

Success looks like...

- A meeting has been co-ordinated with the Strategic Planning Team to identify future growth and commercial land opportunities.
- A stock take of existing environmental initiatives has been undertaken.
- An education day is held with the

community to promote the importance of protecting and preserving our natural environment in partnership with others.

- A meeting has been co-ordinated with the Council's Waste Minimisation and Climate Action and Sustainability Teams on opportunities to educate the Tuakau community on what it means to protect and enhance our environment.
- We have established a group of passionate individuals within the community to support and assist with environmental initiatives within the community.

Social Wellbeing

Connecting our diverse community through active participation, inclusive events and safe welcoming spaces.

This matters because...

With a growing community rich in diversity, we need to foster strong social connection and enhance our social infrastructure that provides our community with a sense of togetherness and belonging so that it continues to be a great place for our people to live, work and play.

Our commitment

- We will undertake a stocktake of what social activity exists in Tuakau in partnership with the Tuakau Youth Club, Marae, and the Tuakau Combined Sports Society.
- Continue to build and strengthen relationships with churches in the Tuakau area.

- Partner with the Tuakau Youth Club to promote and advocate for social activities for our youth.
- Work with our community to promote Hei Tiaki and Settlers Day along with other culturally significant events.
- Promote social activity to reduce social isolation.
- We will establish an events calendar for our community to raise awareness of social activity and culturally significant events taking place within our area.
- Work with our community to ensure that community facilities are positioned in places that supports community connection such as entertainment and recreational events to create vibrant outdoor spaces. As part of this mahi we will draw the connection with our Community-Led Development Advisor to provide support through the Blueprints and community aspirations.
- Advocate for walkways to enable safe passage for our community.
- Partner with passionate individuals in our community to develop welcome packs for new people into the village.
- We as a Board will support discretionary funding on projects aligned to enhancing social wellbeing.
- As a Board we will support community-led development with
- Letters of support for our community's priorities identified through the Blueprints and other community aspirations that our community wants to undertake.



Success looks like...

- We have actively promoted social activity across our community using multiple communication channels.
- We have conducted a stocktake of all social activity within our community.
- Our community will be aware of the different social activities available to them within the Tuakau community.
- Communities will have access to local community facilities.

Engagement

We are committed to citizen-led decision-making.

This matters because...

Engagement is vital for fostering a strong sense of community and leads to better wellbeing outcomes for our communities. The community elected us to represent them, and it is important that we bring the voice of our people to the decision-making table.

Our commitment

- Build capability in our community around Council processes for example, Long Term Plans, Annual Plans, Policy Reviews and other matters that Council is seeking consultation on.
- Through our partnership with Council, we will be the main conduit out to our community to increase participation in citizen led decision-making.
- Engage with our community on plans in the Tuakau area using a variety of communication channels.

- Facilitate community hui on matters of interest to ensure the voice of the community, including the voice of mana whenua, is well represented within our decision-making.
- Identify key stakeholders within our community and strengthen our relationships with them.
- Continue to strengthen our relationship with local marae and hapuu groups.
- Partner with passionate individuals to support the us when required.

Success looks like...

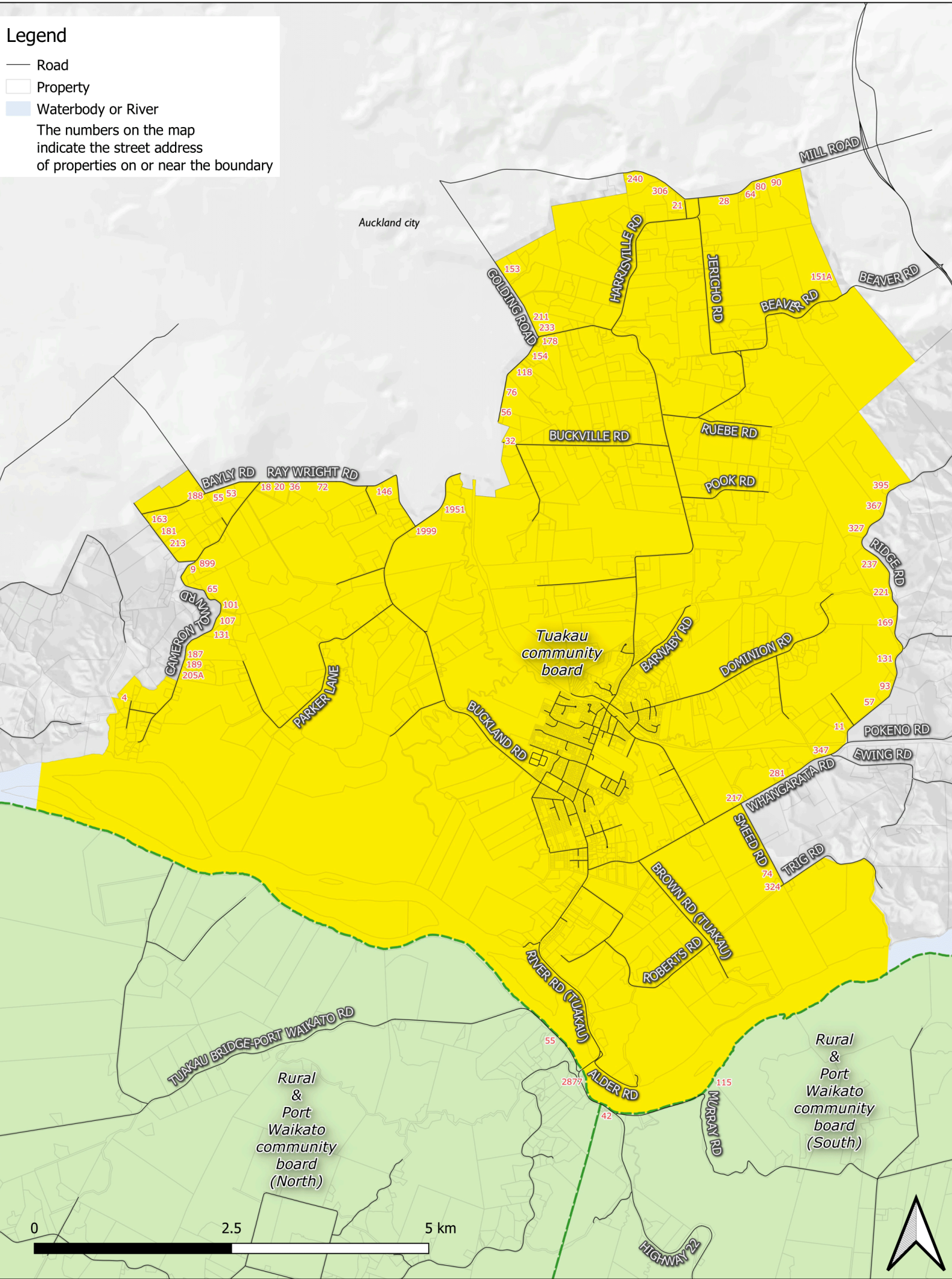
- Increased numbers of submissions are evidenced on areas that the community feel strongly about.
- Regular communication to the community following our Community Board meetings and on matters directly relating to the Tuakau community is made.
- Increased levels of community involvement on matters and issues that relate to them.
- Relationships with key stakeholders are being fostered and nurtured.
- The community is using Council systems for their requests.



Legend

- Road
- Property
- Waterbody or River

The numbers on the map indicate the street address of properties on or near the boundary





Key amenities and services

Council Facilities



1 Library and 1 Council Services Centre



4 Council parks



1 War Memorial Hall

Community and Education



1 Community museum



6 different denomination churches



2 Primary schools, 1 composite school, 1 secondary school, 7 early childhood education centres

Emergency Services



1 Volunteer fire brigade (first responders)



1 Emergency Response Group



1 Police station



1 Community Patrol

Recreation and shopping



Tuakau offers a range of recreational activities for all ages.



1 Shopping area on the main street

Community Board Investment

The Tuakau Community Board has funding available for allocation each year. The purpose of this fund is to assist community groups projects.

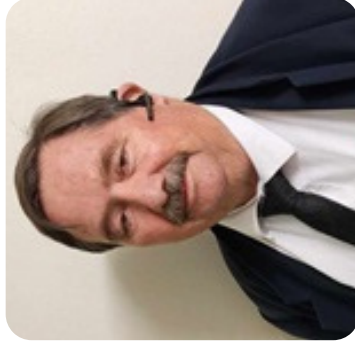
If you would like to apply for funding, or for more information, please visit waikatodistrict.govt.nz/community-funding-grants or scan the below QR code.



Your Community Board



Grace Tema-Liapaneke
Chairperson



Richard Gee
Deputy Chairperson



Fili Semau
Board member



Stephanie Henderson
Board member



David Henderson
Board member



Carl Morgan
Board member



**Councillor Paaniora
Matatahi-Poutapu**
Board member



Councillor Vernon Reeve
Board member



**The Tuakau
Community Board**
would like to recognise
the valuable
contribution made by
Cr Kandi Ngataki to
the Board &
Community

CREATING
LIVEABLE, THRIVING
+ CONNECTED
COMMUNITIES