



Rural-Port Waikato Community Board Plan 2024-2026

TABLE OF CONTENTS



01

**A message from your
Community Board**

Page 2

02

**About community boards
and committees**

Page 3

03

**Our community
outcomes**

Page 4

04

Our vision

Page 5

05

Our priorities

Page 6

06

Map of community area

Page 11

07

**Key amenities and
facilities**

age 12

08

**Community committee
investment**

Page 13

09

**Your community
committee**

Page 14

A message from your Community Board

Kia ora koutou,

We are thrilled to present our Community Board Plan for 2024-2026.

The Rural Port Waikato Community Board Plan reflects extensive community engagement, including recent consultations via social media, public events, and face-to-face interactions.

As representatives of the community, the Rural Port Waikato Community Board is committed to advocating for community issues, and ensuring that community voices are heard and that our communities are kept well-informed of changes in their area.

A Community Board Plan also serves to provide Council with a basis to understand who we are, and to respond meaningfully, through policy and investment, to the opportunities and challenges as they arrive.

Ngaa mihi nui,

The Rural Port Waikato Community Board



About community boards

Community Boards play an important role in local governance and citizen-led democracy, serving as the primary link between the local community and the Council.

Our main role is to:

- Represent and advocate for the interests of the community.
- Consider and report on all matters referred to it by the council, or any matter of interest to the board.
- Maintain an overview of council services in the community.
- Prepare an annual submission to the council for expenditure within the community.
- Communicate with community organisations and special interest groups within the community.

Community Board Plans

Community Board Plans are developed every three years and outline our key priorities for our elected term. They also indicate how we will work in partnership with locals and mana whenua to achieve the Council's community outcomes.

A key part of the development of our plan is engagement with locals to ensure that our priorities reflect the needs and desires of the Rural-Port Waikato area.



Our Community Outcomes

Everything we do is aimed at improving the wellbeing of the people that live, work, and explore the Waikato District. Our Community outcomes were developed under the four wellbeing pillars and describe what we want to achieve for the Waikato District into the future.



Cultural

We celebrate who we are.

We celebrate all cultures. We treasure our diverse communities, and acknowledge our cultural rights and obligations. We acknowledge Te Tiriti o Waitangi and the relationship with mana whenua of our district.



Economic

We support local prosperity.

We champion sustainable growth in our local economy. We support local enterprise and encourage innovation and socio-economic prosperity for all, while managing regulatory processes to protect and promote our unique district. We acknowledge our rural and Maaori economies as key contributors to our district's prosperity and sustainability.



Environmental

Our environmental health underpins the health of our people.

We want waterways which are healthy and create connections. We protect and enhance our soils, water and native biodiversity and take care of our taiao (natural environment) for the health and wellbeing of our people, our communities and for future generations.



Social

We have well connected communities.

Our communities are connected, safe, accessible and resilient. We put community wellbeing at the heart of our decisions, and we embrace partnerships to get things done to improve people's lives.



Our Vision

Ensuring Rural and Port Waikato is a place of opportunity where people want to live, learn, work, play and invest now and into the future.

Our vision statements:

- To have a strong relationship with our community as a respected arm of Waikato District Council.
- To have a strong relationship with Council so that the voice of our community is kept well-informed of things happening in our area.
- The views, interests, needs and aspirations of all residents and cultures are effectively represented.
- We have an open and transparent decision-making process that residents can understand and engage in.
- Our focus is to enhance environmental, cultural, social and economic wellbeing and prosperity.

Our priorities

Environmental Wellbeing

Protect, enhance and understand our unique natural environment in partnership with mana whenua and our local community.

This matters because...

As a Board we have a responsibility to protect and maintain our natural environment now and for future generations.

Our commitment

- Facilitate and support community days, in partnership with other organisations, to educate and encourage the preservation and enhancement of our natural environment and biodiversity.
- Advocate for the protection and preservation of our natural environment.
- Work, in partnership with others to identify critical risks that may impact our community.
- Encourage and support community-led resilience planning.
- Support and promote local catchment groups activity in our local community.
- Support discretionary funding when available on projects aligned to enhancing environmental wellbeing.
- Support community-led development with letters of support for our community's priorities identified through the Blueprints and other community aspirations driven by our communities.

Success looks like...

- An education day is held with the community to promote the importance of our protecting and preserving our natural environment and biodiversity in partnership with others.
- A meeting has been co-ordinated with the Council's Waste Minimisation, Climate Action and Sustainability teams to educate our residents on the services available to them, which will enable them to make use of these services and make better informed choices.
- Resilience planning has been promoted through various channels.
- A meeting has been held with key stakeholders to identify where the critical risks lay within the Rural and Port Waikato area.
- Local environmental day(s) have been held with the local community.

Economic Wellbeing

Support and encourage sustainable growth and investment in reliable infrastructure (including roading) while protecting our environment and agri-business assets to ensure community resilience for future generations.

This matters because...

Our community is predominantly made up of small agri-businesses and owner operators that are crucial for the health of our local economy.

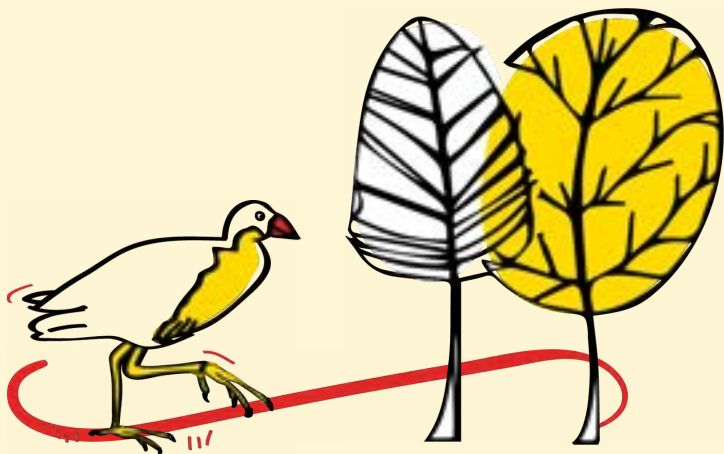


Our commitment

- Strengthen our relationship with the Waikato District Council's Rooding team for a safe and well-maintained rooding network.
- Develop, in partnership with others, a local business directory.
- Once developed, promote the business directory through a variety of communication channels.
- Promote and support sustainable growth and investment.
- Advocate and promote localism.
- Provide updates to our business community on issues that may impact them.
- Support discretionary funding when available on projects aligned to enhancing economic wellbeing.
- Support community-led development with letters of support for our community's priorities identified through the Blueprints and other community aspirations driven by our communities.

Success looks like...

- The Board has actively promoted and advocated for growth and investment for Rural-Port Waikato.
- Updates have been provided to our business community on issues that may impact them.



- A business directory has been created in partnership with others and has been actively promoted.
- The Board has actively promoted and advocated for growth, investment, and tourism for Rural-Port Waikato.

Social Wellbeing

Build a strong tapestry of connection through our diverse community.

This matters because...

Having demonstrated community resilience during severe weather events, it is important we build social cohesion and ensure a sense of wellbeing which creates belonging and togetherness.

Our commitment

- Promote and celebrate community events and culturally significant events such as, but not limited to, language weeks, ANZAC day, Waitangi Day, Matariki, Diwali, fishing competitions, the Christmas Parade, Music and the Park and art events.
- Undertake a stocktake of what social activity and social services exist that support the Rural and Port Waikato area.
- Promote and celebrate the social activity and social services using various communication channels.
- The Board will partner with communities to celebrate the unsung heroes within the Rural and Port Waikato area.
- Advocate for green spaces and walkways to enable connection.

- The will Board partner with people and communities to enable community connecting days.
- Build relationships with our local Police and local businesses to create a safe community.
- Advocate and lobby for improved tele communication services for Rural-Port Waikato.
- Support discretionary funding when available on projects aligned to enhancing social wellbeing.
- Support community-led development with letters of support for our community's priorities identified through the Blueprints and other community aspirations driven by our communities.

Success looks like...

- The Board has conducted a stocktake of all social activity and social services within its community.
- The Board has actively promoted social activity and social services across its community using multiple communication channels.
- Our community will be aware of the different social activities and social services available to them within the Rural-Port Waikato community.
- The Board has celebrated its unsung heroes within its local community.
- A community connection day has been held for its local community.
- A meeting has been held with local police to discuss community safety issues.



Cultural Wellbeing

Grow and strengthen our partnerships with mana whenua, our local community and the Waikato District Council.

This matters because...

Together we are stronger and in partnership the future is exciting.

Our commitment

- Continue to build and strengthen our relationship with mana whenua and our diverse communities to ensure all perspectives are heard.
- Celebrate and promote creativity, arts, all cultures, heritage, the rich history of our area, and culturally significant events.
- Seek advice and perspective on cultural matters, including Te Ao Maaori values and those of our community to enhance cultural wellbeing.
- Hold hui on our local Marae from time to time.
- Support discretionary funding when available on projects aligned to enhancing cultural wellbeing.
- Support community-led development with letters of support for our community's priorities identified through the Blueprints and other community aspirations driven by our communities.

Success looks like...

- Regular engagement is being made with mana whenua.

- Arts and culturally significant events are celebrated and actively promoted in Rural-Port Waikato.
- The rich history of Rural and Port Waikato has been celebrated.

Engagement

We are committed to citizen-led decision-making.

This matters because...

Engagement is vital for fostering a strong sense of community and leads to better wellbeing outcomes for our communities. We are representative of the community that elected us to office therefore it is important that we bring the voice of our people to the decision-making table.

Our commitment

- Build capability in our community around Council processes for example, Long Term Plans, Annual Plans, Policy Reviews and other matters that Council is seeking consultation on.
- Through its partnership with Council the Board will be the main conduit out to its community to increase participation in citizen led decision-making.
- Engage with our community on plans in the Rural-Port Waikato area using a variety of communication channels.
- Facilitate community hui on matters of interest to ensure the voice of the community, including the voice of mana whenua, is well represented within our decision-making.

Identify key stakeholders within our community and strengthen our relationships with them.

- Continue to strengthen our relationship with local Marae and Hapu groups.
- Use the knowledge of our communities to inform good decision-making.
- Partner with the local area school to ensure youth voices are represented.

Success looks like

- Increased numbers of submissions are evidenced on areas that the community feel strongly about.
- Regular communication to the community following Community Board meetings and on matters directly relating to the Rural-Port Waikato community is made.
- Increased levels of community involvement on matters and issues that relate to them.
- Relationships with key stakeholders are being fostered and nurtured.
- The community is using Council systems for their requests.
- Engagement with youth from the area school has been undertaken.





Legend

- State highway
- SH22
- Tuakau Bridge Road
- Glen Murray Road
- Rural & Port Waikato community board



Rural & Port Waikato community board





Key amenities and services

Council Facilities



7 Playgrounds and reserves, and 1 public pool



6 Council-owned halls

Community and Education



1 Te Kura Kaupapa Maaori
3 primary schools
1 area school



2 Te Koohanga Reo
2 Early childhood education centres

Emergency Services



2 Volunteer fire brigades and medical first responders



16 Defibrillators across Rural and Port Waikato area

Recreation and attractions



Our area offers a range of recreational activities for all ages.



Our area offers a range of visitor attractions, and a rugged west coast coastline



Community Board Investment

We have funding available for allocation each year. The purpose of this fund is to assist community groups projects.

If you would like to apply for funding, or for more information, please visit waikatodistrict.govt.nz/community-funding-grants or scan the below QR code.



Your Community Board



Bruce Cameron
Chairperson



Leah Fry
Deputy Chair



Flee Coker-Grey



Rosemarie Costar



Councillor Carolyn Eyre



**Councillor Paaniora
Matatahi-Poutapu**



CREATING
LIVEABLE, THRIVING
+ CONNECTED
COMMUNITIES

