



# **Raglan Community Board Plan 2024-2026**

# TABLE OF CONTENTS



**01**

**A message from your  
Community Board**

Page 2

**02**

**About community boards  
and committees**

Page 3

**03**

**Our community  
outcomes**

Page 4

**04**

**Our vision**

Page 5

**05**

**Our priorities**

Page 6

**06**

**Map of community area**

Page 11

**07**

**Key amenities and  
facilities**

Page 12

**08**

**Community committee  
investment**

Page 13

**09**

**Your community  
committee**

Page 14

# *A message from your Community Board*

The Raglan Community Board is excited to present our Community Board Plan. The plan focuses on enhancing economic, social, cultural and environmental wellbeing for present and future generations.

We commit to continue to advocate for our communities.



# About community boards

Community Boards play an important role in local governance and citizen-led democracy, serving as the primary link between the local community and the Council. We are your representatives at council, and respected connectors into the community.

Our roles are governed by the Local Government Act 2002. Some of the roles specified are:

- The key connector between the community and council.
- Advocate for and represent the interests of our community.
- Consider and report on all matters referred to us by the council, or any other matter of interest to us as a board.
- Keep track of the services provided by the council in our community.
- Prepare an annual submission to the council for expenditure within our community.
- Engage with organisations and special interest groups within the local community.

## Community Board Plans

Community Board Plans are developed every three years and outline our key priorities for our elected term. They also indicate how we will work in partnership with locals and mana whenua to achieve the Council's community outcomes.

A key part of the development of our plan is engagement with locals to ensure that our priorities reflect the needs and desires of Raglan.



# Our Community Outcomes



Everything we do is aimed at improving the wellbeing of the people that live, work, and explore the Waikato District. Our Community outcomes are developed under the four wellbeing pillars and describe what we want to achieve for the Waikato District into the future.



## Cultural

### We celebrate who we are.

We celebrate all cultures. We treasure our diverse communities, and acknowledge our cultural rights and obligations. We honour, understand and implement Te Tiriti o Waitangi and acknowledge the relationship with mana whenua of our district.



## Economic

### We support local prosperity.

We champion sustainable growth in our local economy. We support local enterprise and encourage innovation and socio-economic prosperity for all, while managing regulatory processes to protect and promote our unique district. We acknowledge our rural and Maaori economies as key contributors to our district's prosperity and sustainability.



## Environmental

### Our environmental health underpins the health of our people.

We want waterways which are healthy and create connections. We protect and enhance our soils, water and native biodiversity and take care of our taiao (natural environment) for the health and wellbeing of our people, our communities and for future generations.



## Social

### We have well connected communities.

Our communities are connected, safe, accessible and resilient. We put community wellbeing at the heart of our decisions, and we embrace partnerships to get things done to improve people's lives.



# **Our Vision**

***Building a sustainable, diverse, safe and caring community.***

## **Our vision statements:**

- The views, interests, needs and aspirations of residents are effectively represented.
- We have an open and transparent decision-making process that residents can understand and engage in.
- Our focus is to enhance environmental, cultural, social and economic wellbeing.
- To have a strong relationship with our community as a respected arm of Waikato District Council.
- To have a strong relationship with Council so that the voice of our community is kept well-informed of things happening in our area.

# Our priorities

## Cultural Wellbeing

Celebrate and support our significant cultural history for Whaingaroa.

### This matters because...

Alongside mana whenua, we are kaitiaki of an area with a unique natural environment and significant heritage which make up our unique identity providing a sense of togetherness and belonging. We actively promote and celebrate arts, culture, and heritage by valuing diversity and fostering inclusion in Whaingaroa.

### Our commitment

- Continue to build and strengthen our relationship with mana whenua to ensure their input and perspective is heard.
- Hold Te Ao Maori values at the core of our decision-making.
- Celebrate and promote our arts, all cultures, and heritage to encourage strength, togetherness and belonging.
- Promote and celebrate language weeks, Diwali, Waitangi Day, Matariki, Chinese New Year and other significant cultural events.
- Work alongside mana whenua to provide advice on enhancing cultural wellbeing across Whaingaroa.
- Promote and celebrate, in partnership with mana whenua, our cultural heritage and unique natural environment.
- Promote and advocate for Te Reo to be used.

- Advocate for signage to outline our local history.
- Work in partnership with our local artists to promote the arts for Whaingaroa.
- We as a Board will support discretionary funding on projects aligned to enhancing cultural wellbeing.
- As a Board we will support community-led development with letters of support for our community's priorities identified through the Blueprints and other community aspirations that our community wants to undertake.

### Success looks like...

- Regular hui is being held with mana whenua.
- Arts and culturally significant events are celebrated and actively promoted in Whaingaroa.
- Networking meetings have been held with local artists.
- The Board is actively promoting the use of Te Reo.

## Economic Wellbeing

Whaingaroa is a place of opportunity where growth, investment, and tourism are encouraged.

### This matters because...

A thriving economy is dependent on growth, investment, and tourism and all have a considerable positive impact on Whaingaroa through business creation, increased workforce, youth employment and visitor attraction.



## Our commitment

- Advocate and lobby for land to be designated appropriately to enable growth and investment to occur.
- Co-ordinate a meeting between Council and the Community Board to discuss planning options for future residential and commercial growth.
- Advocate and encourage localism.
- Hold a networking hui, in partnership with others, to celebrate our business community.
- Partner with organisations and local business to offer the right support to support our young people into employment.
- Work with our youth and other organisations to ensure that our young people are well positioned for sustainable career pathways.
- Continue to build and strengthen our relationship with the Raglan Chamber of Commerce.
- Promote and advocate for tourism opportunities to attract visitors to our community.
- We as a Board will support discretionary funding on projects aligned to enhancing economic wellbeing.
- As a Board we will support community-led development with letters of support for our community's priorities identified through the Blueprints and other community aspirations that our community wants to undertake

## Success looks like...

- A meeting has been co-ordinated with the Strategic Planning Team to identify future growth and commercial land opportunities.

- The Board has actively promoted and advocated for growth, investment, and tourism for Whaingaroa.
- Youth to employment sessions have been held in partnership with others.
- Discussions with the schools, mana whenua, and other organisations on sustainable career pathways are underway.
- Relationships have been built and a networking hui held with local business to showcase the Board's priorities regarding economic wellbeing and youth to local employment.

## Environmental Wellbeing

Protect and leave better our natural environment in partnership with mana whenua through sustainable community relationships.

### This matters because...

As kaitiaki of our natural environment and significant heritage, alongside mana whenua, we have a duty to protect, enhance and preserve our history and our waterways, now and for our future generations. Additionally, we also have a responsibility to ensure that we mitigate against any adverse effects on Te Taiao (our environment).





## Our commitment

- Partner with Council, the Waikato Regional Council, Waikato Tainui, mana whenua, to identify the many opportunities for native planting and ecological restoration.
- Encourage the use of ecological initiatives to mitigate natural hazards where appropriate.
- Advocate for the protection of our natural environment and significant heritage.
- Continue to build and strengthen our relationships with our environmental groups including the Whaingaroa Environment Centre.
- Support and promote environmental projects and initiatives happening within Whaingaroa.
- Encourage and support community-led resilience planning.
- We as a Board will support discretionary funding on projects aligned to enhancing environmental wellbeing.
- As a Board we will support community-led development with letters of support for our community's priorities identified through the Blueprints and other community aspirations that our community wants to undertake.

## Success looks like...

- A meeting with Council, Waikato Regional Council, Waikato Tainui, mana whenua, to discuss opportunities for native planting and ecological restoration is held.
- The Board is actively advocating for the protection of our natural environment and significant heritage.

- Board members have established a group of passionate individuals within the community to support and assist with environmental initiatives within the community.
- Resilience planning which includes climate mitigation measures within the Whaingaroa community has been promoted through various channels.

## Social Wellbeing

Creating a cohesive and safe community that cares for one another.

### This matters because...

With a growing community rich in diversity, it is important that we know our neighbours by fostering and nurturing social cohesion to ensure our community feel connected, safe and welcome.

## Our commitment

- Identify and promote social activities such as, Matariki celebrations, Waitangi Day, and Diwali.
- Promote and celebrate the volunteer organisations that support Whaingaroa.
- Identify and promote the social services that exist in Whaingaroa.
- Connect our community to our beautiful natural environment through a variety of communication channels.
- Hold community connecting events, in partnership with others.



- Work in partnership with others on how we welcome the new residents to Whaingaroa.
- Advocate for walkways and green spaces to enable connectivity within our community.
- Advocate for public transport to enable connection.
- In partnership with our local Police and others we will advocate for safe spaces within our community.
- Co-opt passionate individuals in its community to enhance the social wellbeing for our community.
- We as a Community Board will support discretionary funding on projects aligned to enhancing social wellbeing.
- As a Community Board we will support community-led development with letters of support for our community's priorities identified through the Blueprints and other community aspirations that our community wants to undertake

### Success looks like...

- The Board has actively promoted social activity across its community using multiple communication channels.
- The Board has identified and promoted social services that exist in Whaingaroa.
- The Board has conducted a stocktake of all social activity within its community.
- Our community will be aware of the different social activities available to

- them within the Whaingaroa community.
- Communities will have access to local community facilities and our beautiful natural environment.
- The Community Board has held a community connection day.

## Engagement

We are committed to citizen-led decision-making.

### This matters because...

Engagement is vital for fostering a strong sense of community and leads to better wellbeing outcomes for our communities. We are representative of the community that elected us to office therefore it is important that we bring the voice of our people to the decision-making table.

### Our commitment

- Build capability in our community around Council processes for example, Long Term Plans, Annual Plans, Policy Reviews and other matters that Council is seeking consultation on.
- Through its partnership with Council the Board will be the main conduit out to its community to increase participation in citizen led decision-making.
- Engage with our community on plans in the Whaingaroa area using a variety of communication channels.
- Facilitate community hui on matters of interest to ensure the voice of the community, including the voice of mana whenua, is well represented within our decision-making.



- Identify key stakeholders within our community and strengthen our relationships with them.
- Continue to strengthen our relationship with local Marae and Hapu groups.
- Co-opt passionate individuals to support the Board when required.

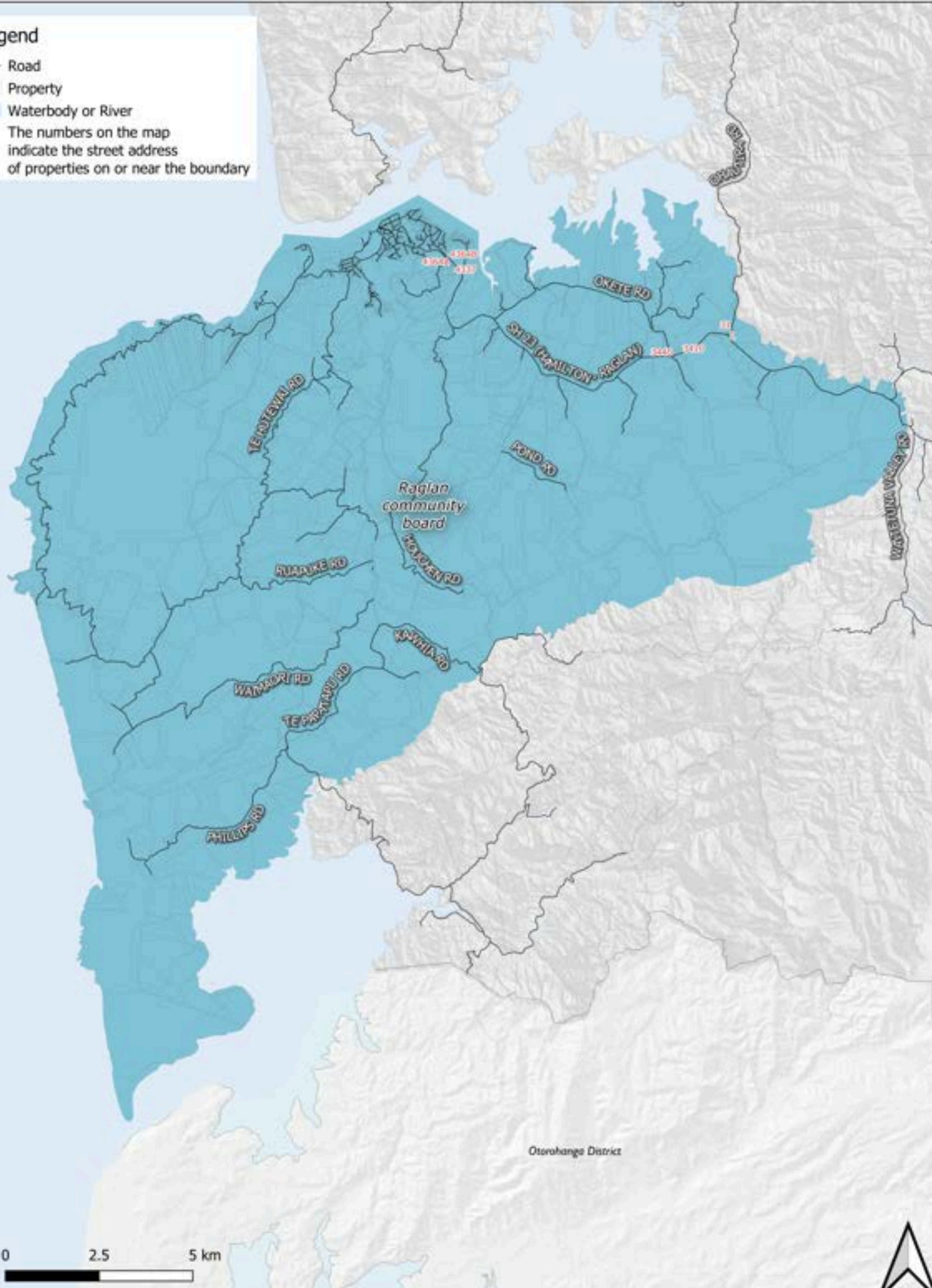
### Success looks like...

- Increased numbers of submissions are evidenced on areas that the community feel strongly about.
- Regular communication to the community following Community Board meetings and on matters directly relating to the Whaingaroa community is made.
- Increased levels of community involvement on matters and issues that relate to them.
- Relationships with key stakeholders are being fostered and nurtured.
- The community is using Council systems for their requests.



**Legend**

- Road
  - Property
  - Waterbody or River
- The numbers on the map indicate the street address of properties on or near the boundary





# Key amenities and services

## Council Facilities



1 Library and Council Services Centre



5 Council parks

## Community and Education



1 Community museum



2 Retirement villages



1 Primary and secondary school, 5 early childhood education centres

## Emergency Services



1 Volunteer fire brigade



1 Ambulance service



1 Police station

## Recreation and shopping



Raglan offers a range of recreational activities for all ages.



1 Shopping area on the main street



# Community Board Investment

The Raglan Community Board has funding available for allocation each year.

The Discretionary Board Fund is open for applications all year, from 1 July to 30 June. The purpose of this fund is to assist community groups where the project and funding request falls outside other council funding criteria and/or closing dates.

If you would like to apply for funding, or for more information, please visit [waikatodistrict.govt.nz/community-funding-grants](https://waikatodistrict.govt.nz/community-funding-grants) or scan the below QR code.



# Your Community Board



**Dennis Amoores**  
Chairperson



**Chris Rayner**  
Deputy Chair



**Kiri Binnersley**



**Ross Wallis**



**Satnam Bains**



**Tony Oosten**



**Councillor Lisa Thomson**



**Councillor Tilly Turner**



CREATING  
LIVEABLE, THRIVING  
+ CONNECTED  
COMMUNITIES

Waikato



District Council  
Te Kaunihera aa Takiwaa o Waikato