



Ngāruawāhia Community Board Plan 2024-2026

TABLE OF CONTENTS



01

**A message from your
Community Board**

Page 2

02

**About community boards
and committees**

Page 3

03

**Our community
outcomes**

Page 4

04

Our vision

Page 5

05

Our priorities

Page 6

06

Map of community area

Page 11

07

**Key amenities and
facilities**

age 12

08

**Community committee
investment**

Page 13

09

**Your community
committee**

Page 14

A message from your Community Board

Kia ora koutou,

We are proud to present our Plan for 2024-26. Our Plan identifies our vision toward creating a livable, thriving and connected Ngaaruawaahia community.

We are passionate about our people, our whaanau, our awa, and our whenua. We stood for the board because we care about you, and we want your voice to be heard.

Our aims are to improve and support the cultural, economic, environmental and social wellbeings of Ngaaruawaahia by fostering a caring, inclusive community.

We want to weave social connectivity into the fabric of Ngaaruawaahia so our community feel safe, proud and a sense of belonging.

The future of our town is exciting, and we look forward to building it with you.

“Ko Ngaaruawaahia tooku Tuurangawaewae”

“Ngaaruwahia, a place to stand.”

- King Tawhiao

Ngaa mihi nui,

The Ngāruawāhia Community Board



About community boards

Community Boards play an important role in local governance and citizen-led democracy, serving as the primary link between the local community and the Council. We are your representatives at council, and respected connectors into the community.

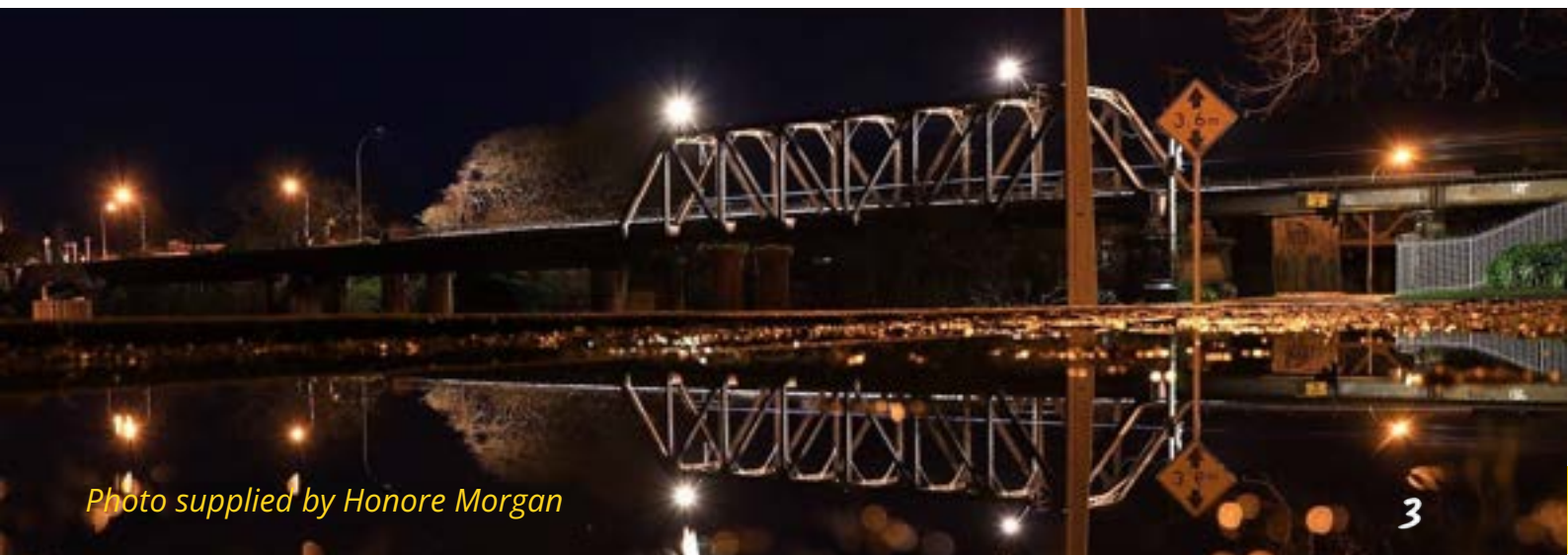
Our roles are governed by the Local Government Act 2002. Some of the roles specified are:

- The key connector between the community and council.
- Advocate for and represent the interests of our community.
- Consider and report on all matters referred to us by the council, or any other matter of interest to us as a board.
- Keep track of the services provided by the council in our community.
- Prepare an annual submission to the council for expenditure within our community.
- Engage with organisations and special interest groups within the local community.

Community Board Plans

Community Board Plans are developed every three years and outline our key priorities for our elected term. They also indicate how we will work in partnership with locals and mana whenua to achieve the Council's community outcomes.

A key part of the development of our plan is engagement with locals to ensure that our priorities reflect the needs and desires of Ngaaruawaahia



Our Community Outcomes



Everything we do is aimed at improving the wellbeing of the people that live, work, and explore the Waikato District. Our Community outcomes are developed under the four wellbeing pillars and describe what we want to achieve for the Waikato District into the future.



Cultural

We celebrate who we are.

We celebrate all cultures. We treasure our diverse communities, and acknowledge our cultural rights and obligations. We honour, understand and implement Te Tiriti o Waitangi and acknowledge the relationship with mana whenua of our district.



Economic

We support local prosperity.

We champion sustainable growth in our local economy. We support local enterprise and encourage innovation and socio-economic prosperity for all, while managing regulatory processes to protect and promote our unique district. We acknowledge our rural and Maaori economies as key contributors to our district's prosperity and sustainability.



Environmental

Our environmental health underpins the health of our people.

We want waterways which are healthy and create connections. We protect and enhance our soils, water and native biodiversity and take care of our taiao (natural environment) for the health and wellbeing of our people, our communities and for future generations.



Social

We have well connected communities.

Our communities are connected, safe, accessible and resilient. We put community wellbeing at the heart of our decisions, and we embrace partnerships to get things done to improve people's lives.



Our Vision

***Kaitiaki mo te whanau, awa me nga maunga.
Guardians proudly connecting our people,
our communities, our rivers, and our lands.***

Our vision statements:

- We are committed to upholding Te Tiriti o Waitangi by engaging well with all community groups and holding Te Ao Maaori values at the core of our decision-making.
- The views, interests, needs and aspirations of residents are effectively represented.
- We have an open and transparent decision-making process that residents can understand and engage in.
- Our focus is to enhance environmental, cultural, social and economic wellbeing.
- To have an strong relationship with our community as a respected arm of Waikato District Council.
- To strengthen our relationship with council so that the voice of our community is kept well-informed of things happening in our area.

Our priorities

Cultural Wellbeing

Fostering a caring, inclusive community culture.

This matters because...

Alongside mana whenua, the Ngāruawāhia Community Board is kaitiaki (guardian) of an area with a unique natural environment and significant heritage that makes up its unique identity; this includes Turangawaewae, the centre of Kingitanga, the Waikato and Waipa awa, and the Hakarimata Ranges. The Board actively promotes, arts, culture, and heritage by valuing diversity and fostering inclusion, safety and connectivity across Ngaaruawaahia.

Our commitment

- Celebrate and promote our arts, all cultures, and heritage to encourage strength, togetherness and belonging.
- Promote and celebrate our diverse community, ensuring everyone feels safe around their cultural practices.
- Continue to build and strengthen our relationship with Ngati Mahuta and Ngati Tamainupo to ensure their input and perspective is heard.
- Promote, celebrate and educate, in partnership with mana whenua, the King's Koroneihana.
- Work in partnership with our local artists to promote the arts for Ngaaruawaahia.
- Promote and advocate for Te Reo to be used in signage.

- We as a Board will support discretionary funding on projects aligned to enhancing cultural wellbeing.
- As a Board we will support community-led development with letters of support for our community's priorities identified through the Blueprints and other community aspirations that our community wants to undertake.

Success looks like...

- Regular hui is being held with mana whenua.
- Arts and culturally significant events are celebrated and actively promoted in Ngaaruawaahia.
- The annual Koroneihana for the King is promoted and celebrated.
- Networking meetings have been held with local artists.

Economic Wellbeing

Growth, investment and tourism opportunities are encouraged, and the dollar is spent in Ngaaruawaahia.

This matters because...

A thriving economy is dependent on growth, investment, and tourism and all have a considerable positive impact on our people in Ngaaruawaahia through business creation, increased workforce, youth employment and visitor attraction.



Our commitment

- Advocate and lobby for land to be designated appropriately to enable growth and investment to occur.
- Advocate and encourage localism, including the procurement of local contractors.
- Partner with organisations and local business to offer the right support to support our young people into employment.
- Work with our youth and other organisations to ensure that our young people are well positioned for sustainable career pathways.
- Undertake a stocktake of existing tourism in Ngaaruawaahia.
- Promote and advocate for tourism opportunities, including environmental tourism, to attract visitors to our village.
- We as a Board will support discretionary funding on projects aligned to enhancing economic wellbeing.
- As a Board we will support community-led development with letters of support for our community's priorities identified through the Blueprints and other community aspirations that our community wants to undertake.

Success looks like...

- A meeting has been co-ordinated with the Strategic Planning Team to identify future growth and commercial land opportunities.
- The Board has actively promoted and advocated for growth, investment and tourism for Ngaaruawaahia.

- Youth to employment sessions have been held in partnership with others.
- Discussions with the schools, mana whenua, and other organisations on sustainable career pathways are underway.
- Relationships have been built and a networking hui held with local business to showcase the Board's priorities regarding economic wellbeing and youth to local employment.

Environmental Wellbeing

Alongside mana whenua, we need to protect, enhance and preserve our natural environment, rich biodiversity, and significant heritage, now and for future generations.

This matters because...

As guardians of our natural environment and significant heritage, alongside mana whenua, we have a duty to protect, enhance and preserve our history, our waterways, including the Waikato and Waipa awa and Pukeahua Pa, now and for our future generations. Additionally, we also have a responsibility to ensure that we mitigate against any adverse effects on Te Taiao (our environment).

Our commitment

- Encourage the use of ecological initiatives to mitigate natural hazards where appropriate.



- Advocate that climate change adaptation and resilience planning includes climate mitigation measures, so that adaptation activities do not contribute to climate change.
- Partner with Council, the Waikato Regional Council, Waikato Tainui, mana whenua, to identify the many opportunities for native planting and ecological restoration.
- Advocate for the protection of our natural environment and significant heritage.
- Undertake a stock take of the environmental projects and initiatives happening within Ngaaruawaahia.
- Hold community days, in partnership with other organisations, to educate and encourage the preservation and enhancement of our natural environment.
- Hold and promote annual clean-up days with the Ngaaruawaahia community in partnership with the Council and our schools.
- Establish a group of local volunteers passionate about protecting and enhancing our natural environment to assist in the education of our community.
- Encourage and support community-led resilience planning.
- We as a Board will support discretionary funding on projects aligned to enhancing environmental wellbeing.

Success looks like...

- A meeting with Council, Waikato Regional Council, Waikato Tainui, mana whenua, to discuss opportunities for native planting and ecological restoration is held.

- An education day is held with the community to promote the importance of our protecting and preserving our natural environment in partnership with others.
- A meeting has been co-ordinated with the Council's Waste Minimisation and Climate Action and Sustainability Teams on opportunities to educate the Ngaaruawaahia community on what it means to protect and enhance our environment.
- Board members have established a group of passionate individuals within the community to support and assist with environmental initiatives within the community.
- Resilience planning which includes climate mitigation measures within the Ngaaruawaahia community has been promoted through various channels.

Social Wellbeing

Weaving social connectivity into the fabric of Ngaaruawaahia so our community feel safe, proud and a sense of belonging.

This matters because...

Our community is growing and the mental health of our people is important, so it is essential that we look after one another by fostering and nurturing relationships through social activity to ensure our community feel connected and safe.



Our commitment

- Build relationships with our local Police and local businesses to create a safe community.
- Undertake a stocktake, in partnership with the Community House, of what activities and social services are available in Ngaaruawaahia and promote these activities through various communication channels.
- Advocate for public transport, cycleways, green spaces.
- Promote and celebrate the Turangawaewae Regatta.
- Identify and promote social activities such as ANZAC day, Christmas Parade, Matariki celebrations, Waitangi Day, and Diwali and other culturally significant events.
- Scope, in partnership with others, a welcome pack for new residents to Ngaaruawaahia.
- Advocate for walkways to enable connectivity and safe passage through our community.
- Co-opt passionate individuals in its community to enhance the social wellbeing for our community.
- We as a Board will support discretionary funding on projects aligned to enhancing social wellbeing.
- As a Board we will support community-led development with letters of support for our community's priorities identified through the Blueprints and other community aspirations that our community wants to undertake



Success looks like...

- Meetings have been held with the local Police and local businesses to ensure Ngaaruawaahia is a safe community.
- The Committee has actively promoted social activity across its community using multiple communication channels.
- The Committee has conducted a stocktake of all activity and social services within its community.
- Our community will be aware of the different social activities available to them within the Ngaaruawaahia community.
- Communities will have access to local community facilities.

Engagement

We are committed to citizen-led decision-making.

This matters because...

Engagement is vital for fostering a strong sense of community and leads to better wellbeing outcomes for our communities. We are representative of the community that elected us to office therefore it is important that we bring the voice of our people to the decision-making table.

Our commitment

- Build capability in our community around Council processes for example, Long Term Plans, Annual Plans, Policy Reviews and other matters that Council is seeking consultation on.
- Through its partnership with Council

- the Board will be the main conduit out to its community to increase participation in citizen led decision-making.
- Engage with our community on plans in the Ngaaruawaahia area using a variety of communication channels.
- Facilitate community hui on matters of interest to ensure the voice of the community, including the voice of mana whenua, is well represented within our decision-making.
- Identify key stakeholders within our community and strengthen our relationships with them.
- Continue to strengthen our relationship with local Marae and Hapu groups.
- Co-opt passionate individuals to support the Board when required.

Success looks like...

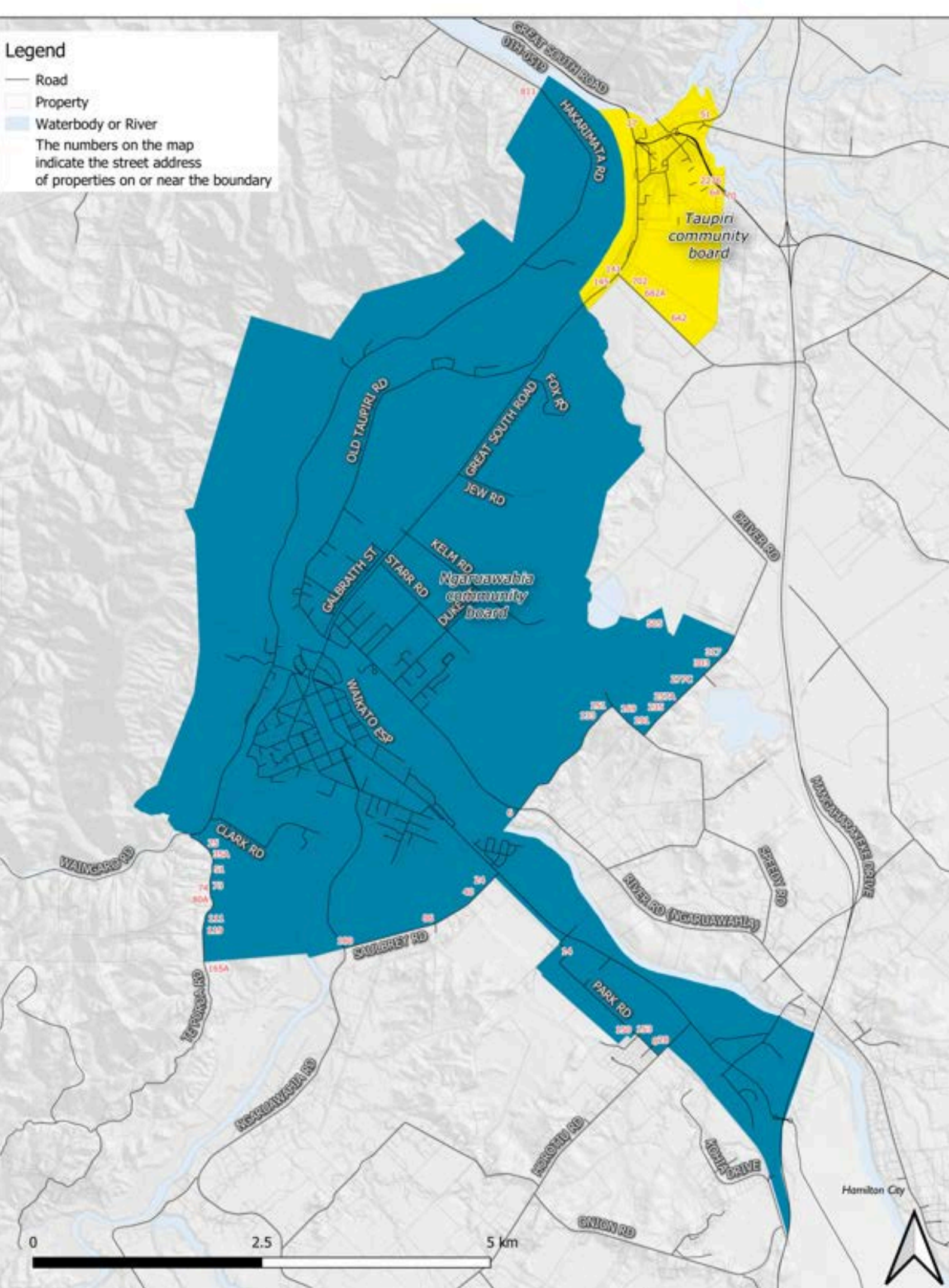
- Increased numbers of submissions are evidenced on areas that the community feel strongly about.
- Regular communication to the community following Community Board meetings and on matters directly relating to the Ngaaruawaahia community is made.
- Increased levels of community involvement on matters and issues that relate to them.
- Relationships with key stakeholders are being fostered and nurtured.
- The community is using Council systems for their requests.



Legend

- Road
- Property
- Waterbody or River

The numbers on the map indicate the street address of properties on or near the boundary



Key amenities and services



Council Facilities



1 Library and 1 Council Services Centre



6 Council parks

Community and Education



- 3 Primary schools
- 1 Kura Kaupapa Maaori primary schools
- 1 secondary school
- 7 early childhood education centres
- 2 Te Koohanga Reo early childhood education centres

Emergency Services



1 Volunteer fire brigade



1 Ambulance service



1 Police station

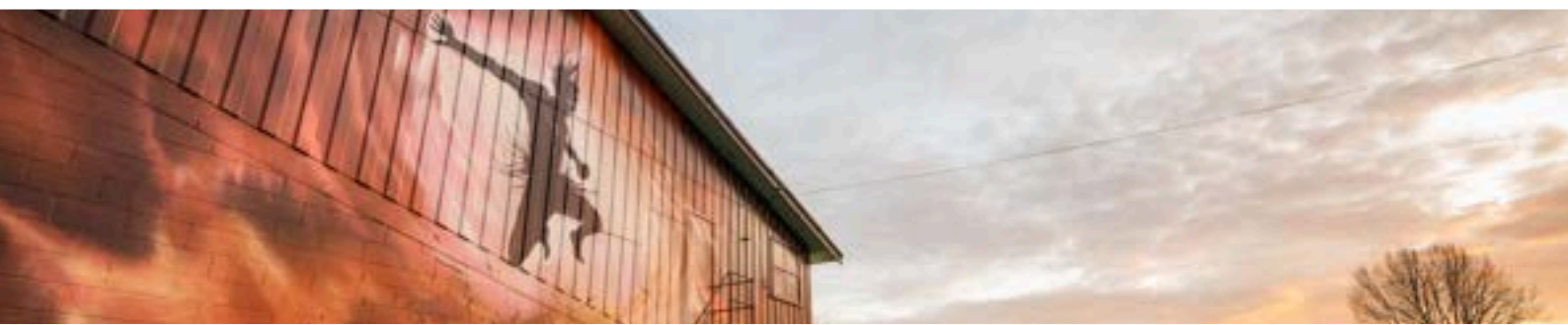
Recreation and shopping



Ngaaruawaahia offers a range of recreational activities for all ages.



A number of retail outlets and a Saturday market.



Community Board Investment

The Ngāruawāhia Community Board has funding available for allocation each year. The purpose of this fund is to assist community groups projects.

If you would like to apply for funding, or for more information, please visit waikatodistrict.govt.nz/community-funding-grants or scan the below QR code.



Your Community Board



Kiri Morgan
Chairperson



Dianne Firth
Deputy Chair



Greg Wiechern



Jack Ayers



Keryn Hooker



Venessa Rice



Councillor
Tilly Turner



Councillor
Eugene Patterson



CREATING
LIVEABLE, THRIVING
+ CONNECTED
COMMUNITIES

Waikato



District Council
Te Kaunihera aa Takiwaa o Waikato