

# Whaingaroa / Raglan WWTP Discharge Consent Application Project

October 2024 – Community Update



1. Consenting Tasks Underway
2. Plant Upgrade Update

# Preferred Option

## Option 1 – Wainui Reserve Western Coastal Gully.

### OPTION 1 ARTISTS IMPRESSION



- Tainui o Tainui support
- Avoids discharge to the Wainui Stream
- Provides land contact
- Land is available/feasible solution
- Additional benefit of gully restoration opportunities

## Drone footage



# Technical Work Completed

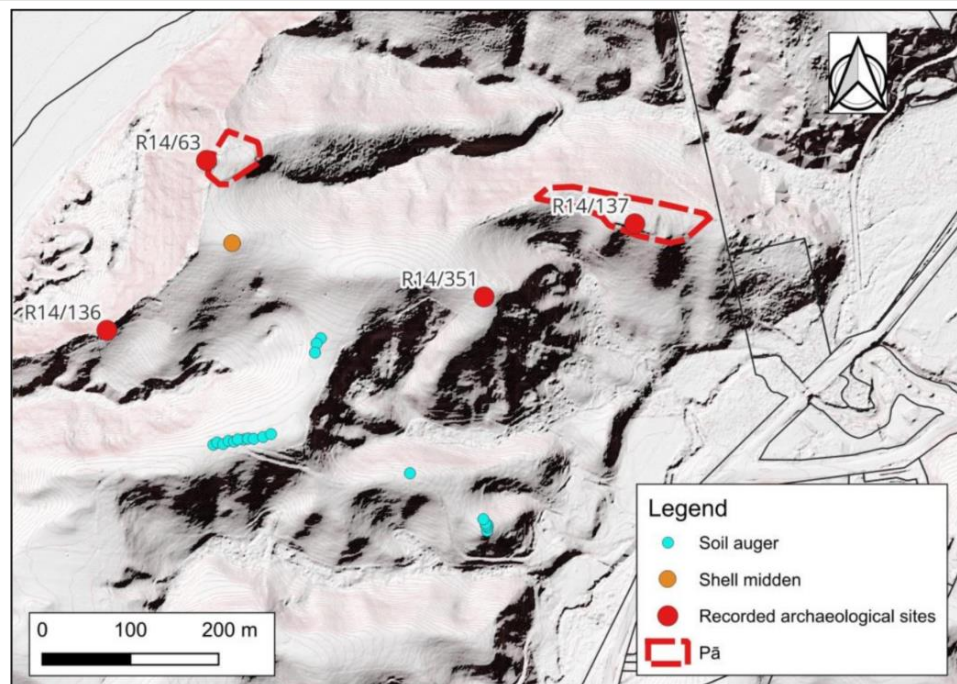
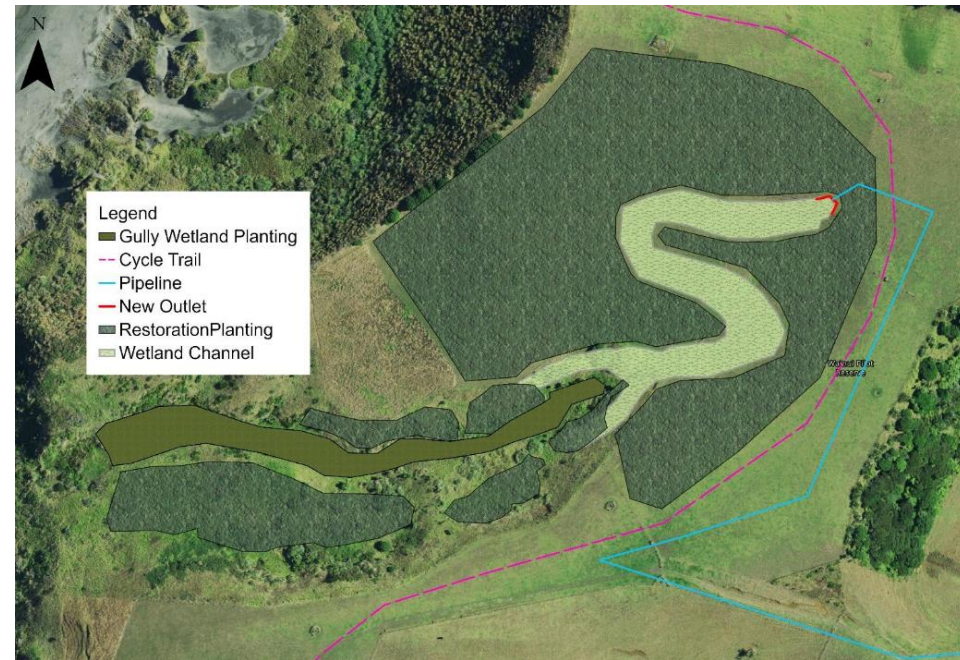


Figure 4: Plan showing the locations of the auger samples and archaeological items. The shell midden is recorded in ArchSite as R14/470.

- Warren Gumbley has completed an archaeological assessment of the discharge site and pipeline corridor.
- No archaeological features were observed along the pipeline route or gully.
- The surrounding planting plan should be aware of the shell midden and R14/136

# Technical Work Completed



- Ecological site visit completed
- Gully currently of low ecological value, exotics prominent, restoration efforts currently not very successful
- Ecological impact assessment being prepared

- Hydrogeological site walk over completed
- Groundwater monitoring planned via 2 bore holes and hand augers. Monitoring for a 3-month period.

# Technical Work Completed

- Consenting Strategy completed and shared with Waikato Regional Council

## Waikato Regional Plan:

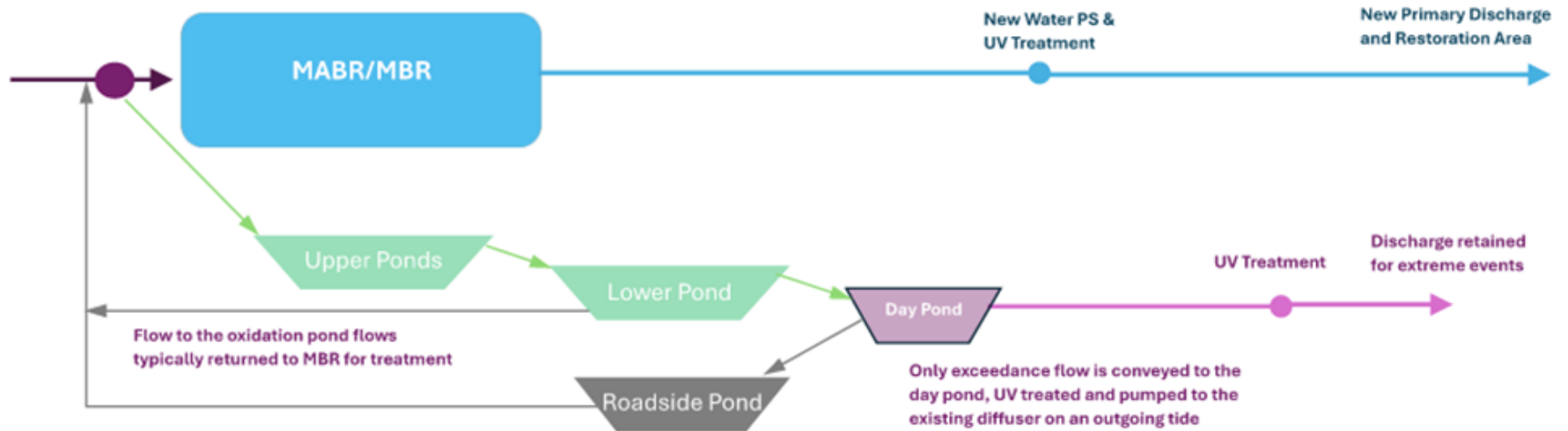
- Long term new consent for the discharge of treated wastewater to land at Wainui reserve (*35-year consent*)
- Long term new consent for the discharge of treated wastewater to land via pond seepage at the WWTP (bundled)
- Long term new discharge to air consent at the treated wastewater discharge site at Wainui reserve
- Long term renewal of discharges to air at the WWTP site (bundled)

## Waikato Regional Coastal Plan:

- Long term new coastal permit for the discharge of treated wastewater to land which will reach the coastal marine area at Wainui. (*35-year consent*)
- Renewal of the existing coastal permit for the discharge of all treated wastewater flows into the CMA/Raglan harbour until such time as the new MBR and discharge solution are operational, then a reduction in the discharge flows to the harbour to only cover contingency flows during high wet weather or bypass events. (*10-year consent, 5-year review condition*)
- Renewal of the existing coastal permit for the occupation and use of the existing harbour outfall.

# High-level Plant Process

## Raglan WWTP MBR Upgrade – Overall Process Schematic



# On-going Engagement

- On going progress catch ups and sharing of technical reports with Angeline as representative for Tainui o Tainui. Opportunities to involve Rangatahi in investigations such as geological and hydrogeological mapping.
- Connected with Chole from the local nursery.
- Site visit with Noel and Glynn to the Te Kauwhata WWTP to show them the quality of permeate that will be produced.
- WDC coms team finalizing the plan for organization of community drop-in sessions in November and February 2025.





# Key Next Steps

- Bore hole drilling and mapping
- Community drop in sessions
- Water and Air quality reporting
- Progressing on concept design/visualization and treatment process
- Start preparation of resource consent

# Progress Update - Raglan WWTP Membrane Bioreactor



# Progress Update - Raglan WWTP Membrane Bioreactor

