

# Whaingaroa / Raglan WWTP Discharge Consent Application Project

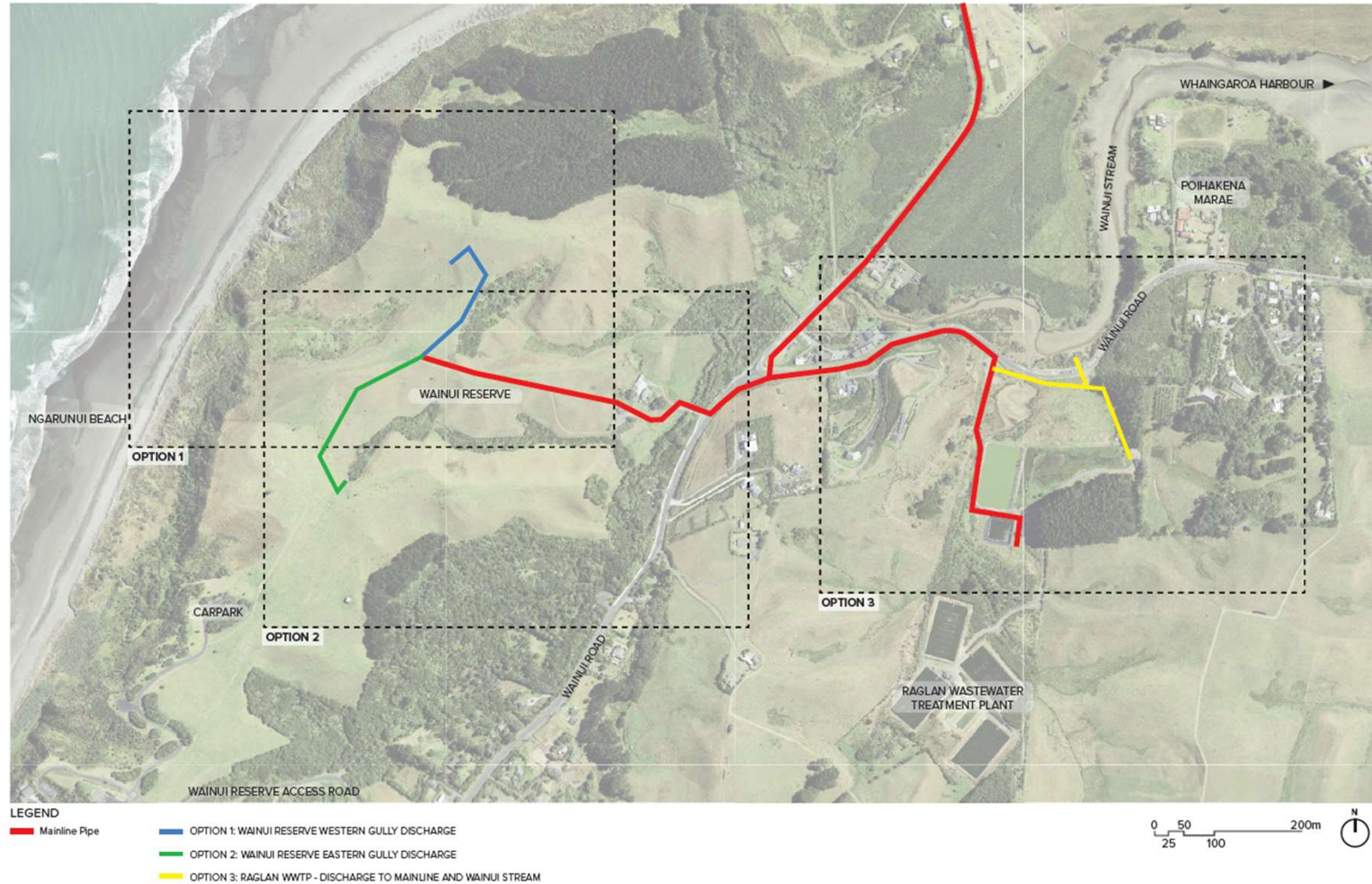
June 2024 – Community Update

1. Consenting Tasks Underway
2. Plant Upgrade Update

# Current Investigations and Studies

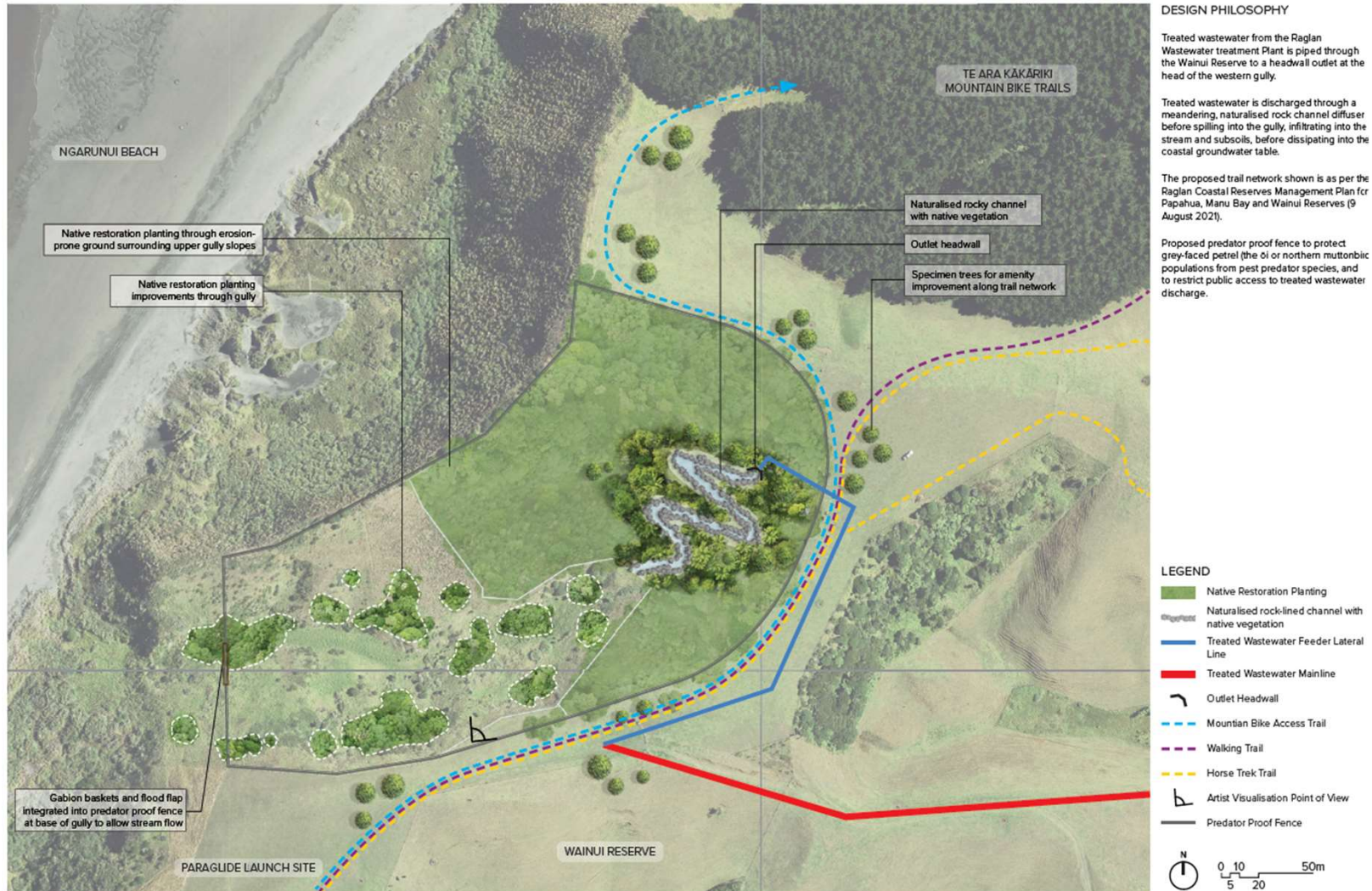
Land contact concepts have been developed for 3 locations.

## LOCATION MAP



# Current Investigations and Studies

## Option 1 – Wainui Reserve Western Coastal Gully.



# Current Investigations and Studies

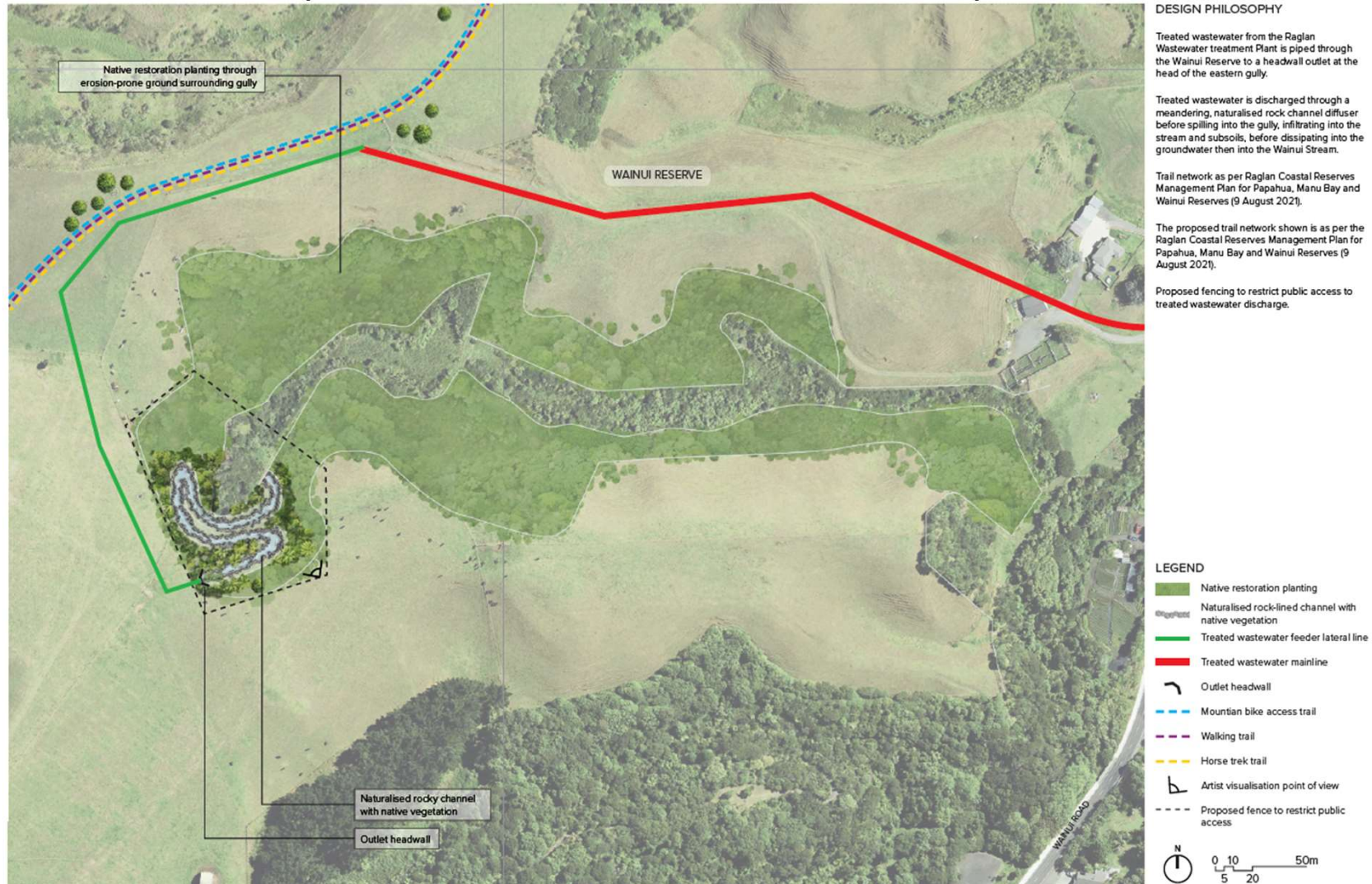
## Option 1 – Wainui Reserve Western Coastal Gully.

### OPTION 1 ARTISTS IMPRESSION



# Current Investigations and Studies

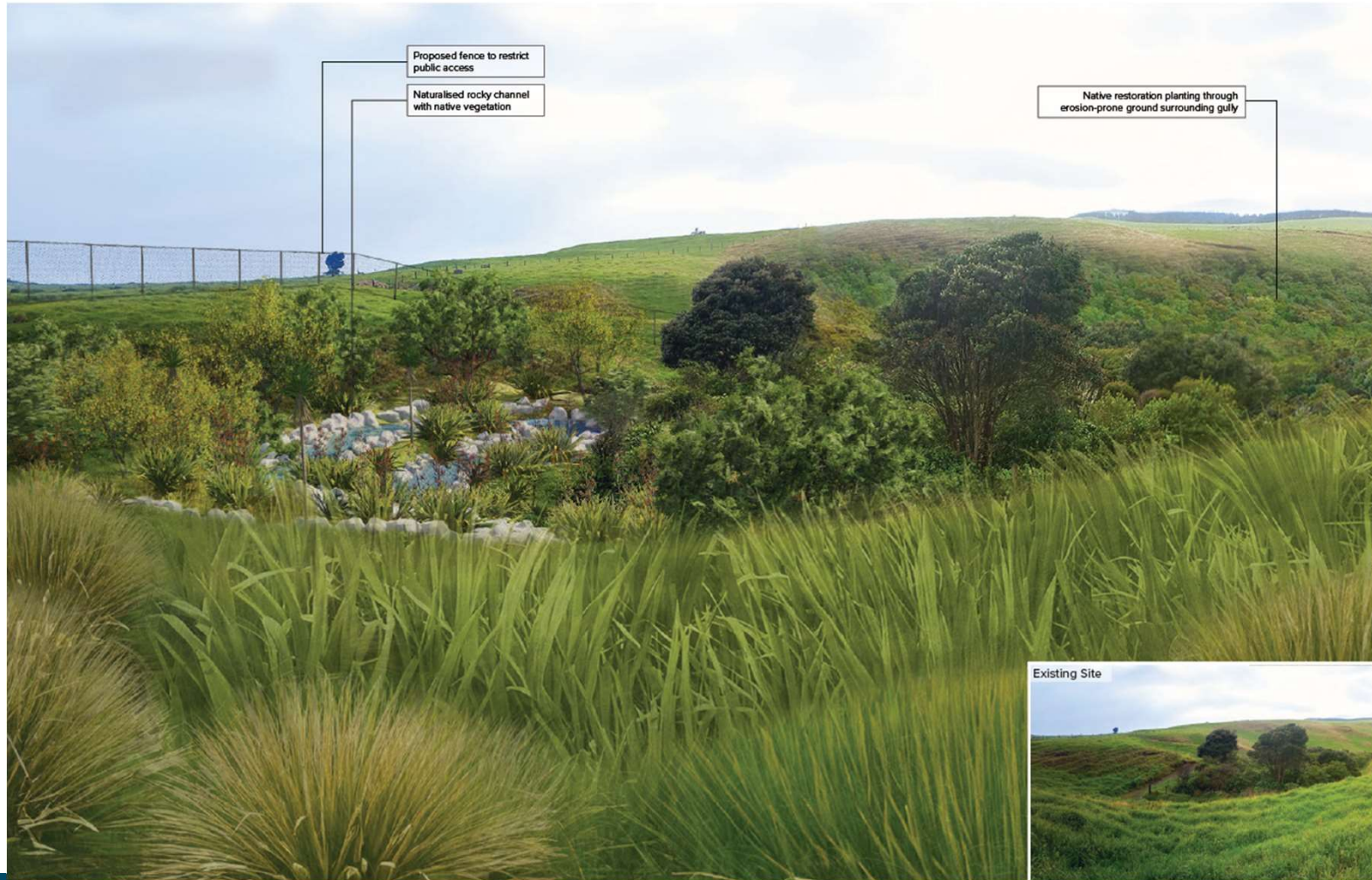
## Option 2 – Wainui Reserve Eastern Gully.



# Current Investigations and Studies

## Option 2 – Wainui Reserve Eastern Gully.

### OPTION 2 ARTISTS IMPRESSION



# Current Investigations and Studies

## Option 3 – WWTP / Wainui Stream.



# Current Investigations and Studies

## Option 3 – WWTP / Wainui Stream.

### OPTION 3 ARTISTS IMPRESSION





# Current Investigations and Studies

- Preliminary discussions and site visit with Tainui o Tainui hapu representative on the 3 options have occurred, where option 3 (WWTP / Wainui Stream) option was ruled out.
- Initial feedback from hapu favoured option 1 (Wainui Reserve Western Coastal Gully).
- Initial dialogue with WDC Reserves staff has started, this has raised issues and Watercare will meet further with them this month to go through the points raised.
- Assessments relating to archaeological & heritage / reserve management / iwi and other stakeholders / ecological impacts / public access / maintenance and funding etc would all be required if the option is progressed.

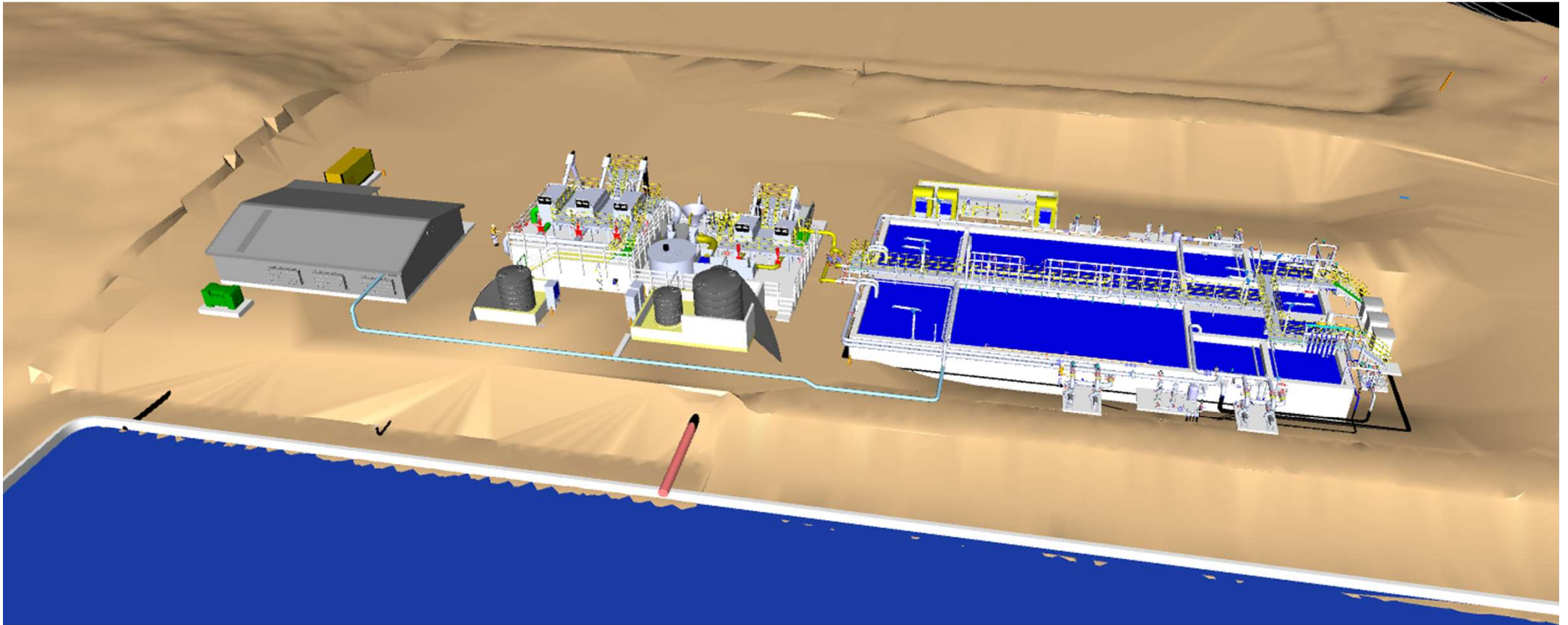


## Progress Update - Raglan WWTP Membrane Bioreactor



- Reactor tank base is complete and wall construction is underway.
- Construction of the sewer pipework will follow, followed by forming the building and screening platform

## Progress Update - Raglan WWTP Membrane Bioreactor



Raglan WWTP Membrane Bioreactor Plant layout