

# Raglan WWTP Discharge Consent Application Project

APRIL 2022 PRE RECORDED UPDATE TO COVER

- (a) Treatment Optioneering – what this means?
- (b) Land securement progression;
- (c) Next Steps

Queries: [Stephen.Howard@water.co.nz](mailto:Stephen.Howard@water.co.nz)

## Treatment Update: Immediate

### Challenge:

Non-compliant Total Suspended Solid Trend over warmer months

–*Immediate (Stage 1) upgrade proposed :*

Treated WW conditioning / Tertiary filter / Backwash),

### Next Step

Necessary governance/regulatory discussion.

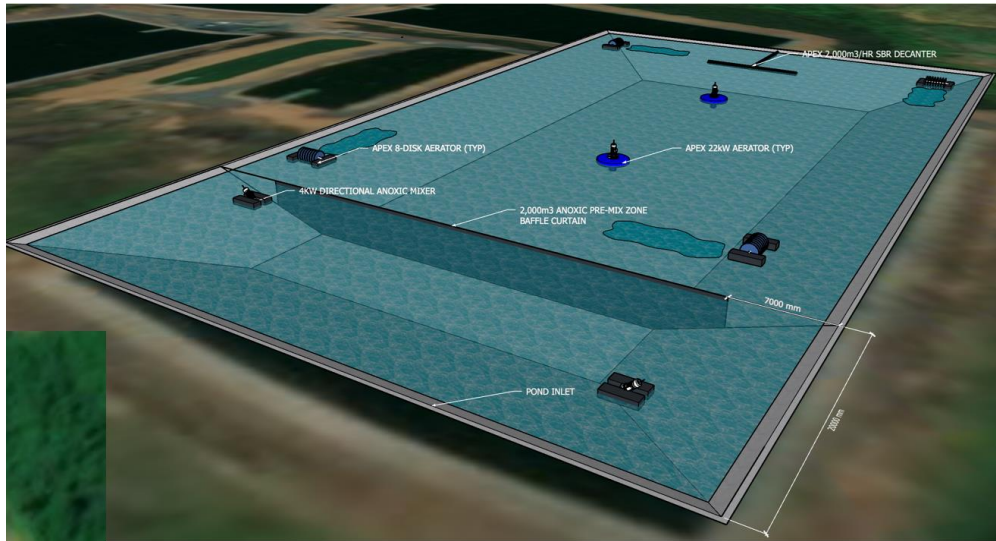
Followed by a long-term upgrade (LTP budget) is to fully resolve in a manner that suits 'Best Practical Option'(BPO)

# Treatment Update: Technical Recommendation for Long Term Upgrade:

## Challenge:

Progressing engineering option breakdown that is responsive to differing BPO scenarios, affordable/represents best practice.

*Key Query: Does this lock in discharge solution? No*



## Next Step:

- (i) Internal engineering refinement
- (ii) Enhanced governance/ key stakeholders/ Haapu & regulatory discussion

ADVICE: Retrofits existing infrastructure/compliments sub surface drip irrigation

## Short listed Options

### Land Option L1:

(T) Existing upgraded treatment process, tertiary membrane +  
(D) Combined public land discharge and alternative discharge  
(i.e. winter flow – culturally treated then point source or high rate to sands)

*Soil: Older Clay*

### Land Option L2:

(T) Existing upgraded treatment process  
(D) Private land discharge and storage

*Soil: Younger Loamy*

24ha 2020 flow  
42ha 2050 flow

(Nitrogen &  
Phosphorous  
management)



# Discharge Update: Sub surface drip irrigation

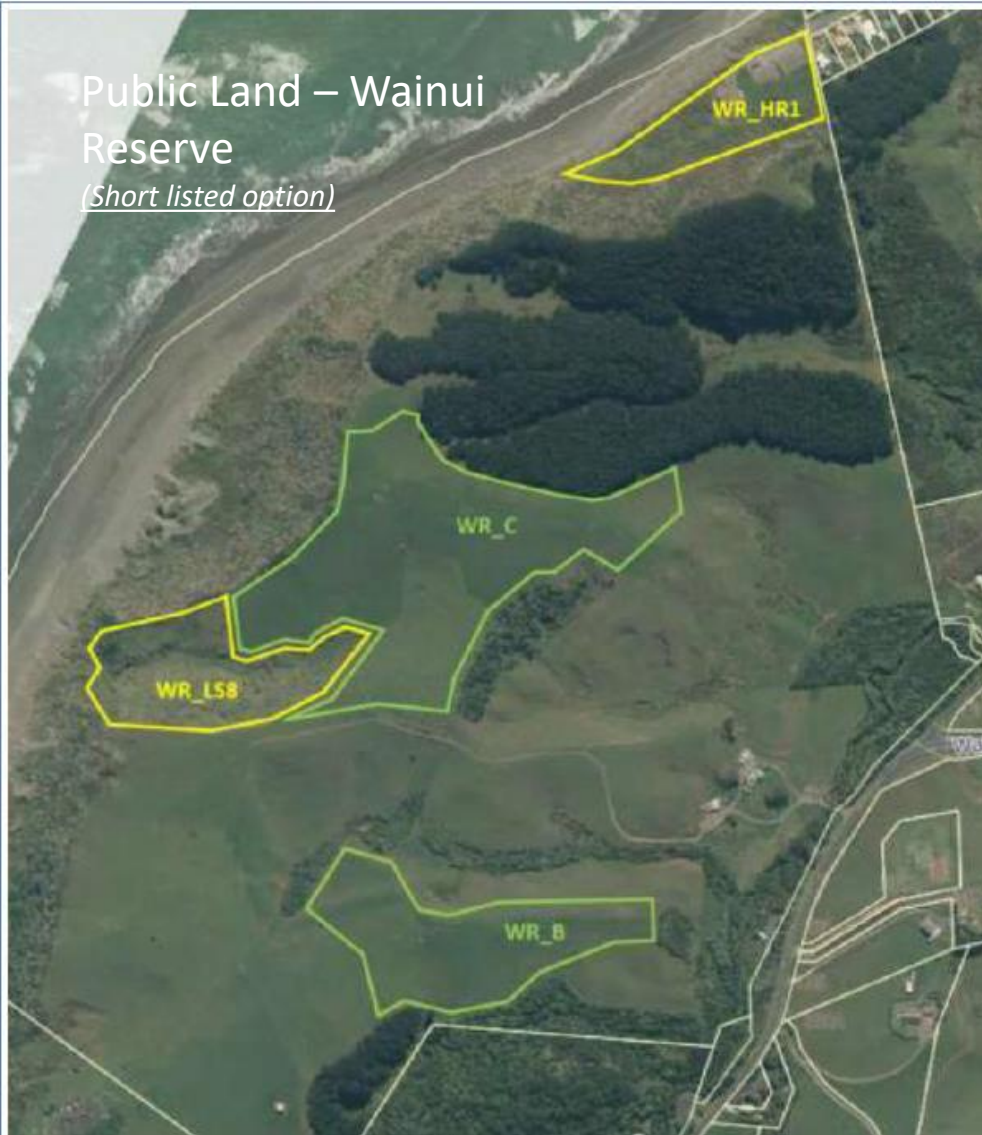


Public Land – Wainui Reserve (*Short listed option*)

# Discharge Update: Sub surface drip irrigation

Public Land – Wainui Reserve

*(Short listed option)*



*The Wainui Reserve is considered:*

- i. A potentially useful addition in combination with another parcel of land to provide a complete land disposal solution; or,*
- ii. A standalone solution with culturally acceptable disposal to the Tasman Sea*

## Discharge Update: Sub surface drip irrigation on public reserve

- Council and Waters Governance Board have been updated on the progress and investigation of SDI within public reserve.
- Support was given on the principle, and process of engagement with the wider Whaingaroa Community on how co-utilisation of public reserve could contribute to such a solution.
- The Reserve Management Act would need to be adhered to, including assurance that the primary use of the reserve (amenity/public recreation) is maintained.

*Key Queries: Does this mean the use of public land is destined to be the best practical discharge option?*